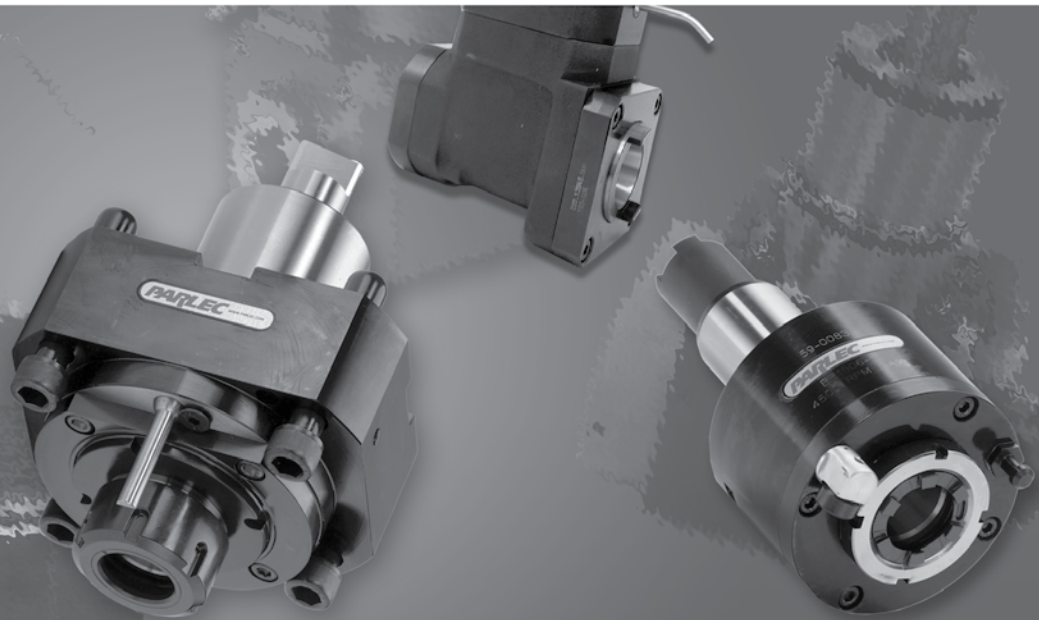


CONTENT

OVERVIEW	207
CITIZEN TOOLING.....	209
DAEWOO TOOLING.....	217
HAAS TOOLING	221
MAZAK TOOLING.....	223
MORI SEIKI TOOLING	249
NAKAMURA TOOLING	261
TOOLING REBUILD SERVICE	263
QUOTATION REQUEST SHEET	264

DRIVEN & STATIC

Driven & Static



All tools are not created equal!

Innovative engineering is a cornerstone in the development of Parlec Driven & Static Tooling. Parlec tools are engineered to run at higher speeds and last longer than our competition – Just what you would expect from the worldwide leader in tooling, workholding, and presetting solutions.

■ Dedication To Technology

Today Parlec is incorporating Supermill® technology into every tool we manufacture. Supermill technology is producing tools that provide superior surface finishes, increased rigidity, increased speed and feed rates, longer cutter lengths, and longer tool life over conventional tools.

■ Bearing Technology

Parlec uses only the highest grade of bearings in every tool to ensure the longest possible bearing life and maximum rigidity on the input and output spindles of a tool.

■ Seal Technology

By incorporating the latest advances in seal technology we have produced tools that can run at higher speeds and last longer than our competition.

■ Worldwide Commitment

Parlec offers factory support around the world and has over 500 locations globally offering sales, distribution, and product support.





CITIZEN

Driven & Static Tools:

- M20, M32, L16 & L20 Series
- LC20 I, II, & VII

Driven Tools:

- L25, L32 & C16 Series
- K12 & K16 Series

DAEWOO

Driven Tools Only:

- PUMA 240, 1500, 2000, 2500
- MX2000, 2500
- TT1500, 1800
- TT2000, 2500

HAAS

Driven & Static Tools:

- SL20, 30, 40
- TL15, 25

MAZAK

Driven & Static Tools and Sockets:

VDI Type Turrets Only

- QTN Nexus 100
- QTN Nexus 200/250
- QTN Nexus 300/350
- QTN Nexus 400/450
- SQT Super Quick Turn 10, 100
- SQT Super Quick Turn 15, 18, 200, 250
- SQT Super Quick Turn 28, 30, 300
- MP Multiplex 420, 4200, 620, 625, 6200, 6250
- MP Multiplex 3200 (Upper Turret only)
- MP Multiplex 430, 4300, 630, 6300

Driven Tools Only:

- MP Multiplex 410, 610, 615, 6100
- Hyper Quadrex MP6100 150MSY

MORI SEIKI

Driven & Static Tools and Sockets:

- NL 1500, 2000, 2500, 3000
- NT4200, 4250, 4300

Driven Tools Only:

- CS20, 200 & CS25, 250
- MT2000, 2500 & ZT2500 40VDI

NAKAMURA

Driven Tools Only:

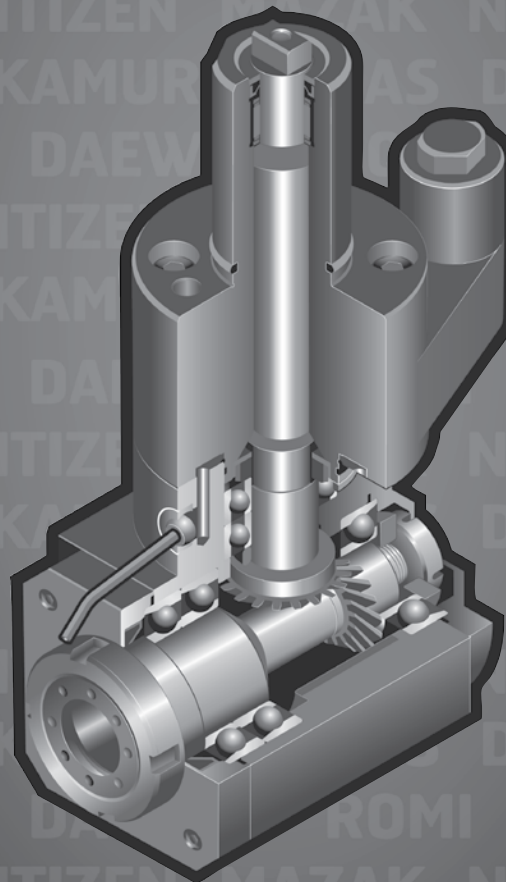
- TW10, TW20
- WT150, WTS150, WTW150, WT250, WT300
- SC150, SC250, SC300
- SUPER NTJ, NTJX
- SUPER NTX
- SUPER NTM³
- TMC 18

BEARINGS

- Bearings moved closer to gears for greater rigidity.
- Matched set of angular contact bearings for maximum rigidity.

HIGH SPEED SEAL

- Technology with "protective" seal placement.



TOOL FEATURES

- Superior surface finishes.
- Increased rigidity.
- Longer tool life.
- Increase in speed and feed rates of up to 25%.

GEAR TECHNOLOGY

- Reduces noise.
- Stronger gear.
- Longer gear life.



Notes



K12 & K16

DRIVEN TOOLS

Part Number	Description	OEM Ref #	Output Spindle	Ratio	Speed Max	Coolant Type	Drawing Index #
GSE2007	DBL END FOUR SPIN-ER11-1000RPM	GSE2007	ER11	1:1	10,000	External	1
GSS450	STR 50MM ARBOR TOOL-10000RPM	GSS450	ER11	1:1	10,000	External	2

M20, M32 SERIES 3

DRIVEN TOOLS

Part Number	Description	OEM Ref #	Output Spindle	Ratio	Speed Max	Coolant Type	Drawing Index #
259.15618.000	STRAIGHT EXT CLNT DRIVEN TOOL ER16	KSC110BT	ER16	1:1	5000	External	3
259.15707.000	STRAIGHT T/COOL DRIVEN TOOL ER16	-	ER16	1:1	5000	Internal	4
259.15613.000	90DEG EXT CLNT DRIVEN TOOL ER16	KSE310	ER16	1:1	5000	External	5
259.15708.000	90DEG T/COOL DRIVEN TOOL ER16	-	ER16	1:1	5000	Internal	6
259.15442.000	SLITTING SAW DRIVEN TOOL ASSEMBLY	KSS263BT	16mm Pilot with 63mm Max Cutter	3:1 Reducer	MIN 69 RPM Output MAX 1655 RPM Output	None	7
259.15441.000	ADJ 0-90 DEG ER11	-	ER11	1:1	200 MIN 5000 MAX	External	8

STATIC TOOLS

Part Number	Description	OEM Ref #	Drawing Index #
259.15443.000	TRIPLE BORING BAR HOLDER 1"	KDFZ401	9
259.74010.000	TRIPLE BORING BAR HOLDER 25MM - T/C	KDFZ401BMT	10
259.15612.000	TRIPLE BORING BAR HOLDER 1" - T/C	KDFZ401BT	11
259.15444.000	DOUBLE TURNING TOOL HLDR 16MM & 16MM	KTFZ216	12
259.15617.000	DBL TURN TOOL HLDR -EXT CLNT 16MM & 16MM	KTFZ216BT	13
259.15908.000	TRIPLE BORIN GBAR HLDR 1"-T/C & EXT CLNT	CDF901BT	14
259.15909.000	DBL TURN TOOL HLDR - EXT CLNT 2-16MM	CTF1116BT	15
259.15950.000	VERTICAL SLEEVE HOLDER	GDF909BT	16

M32 SERIES 5 ONLY

DRIVEN TOOLS

Part Number	Description	OEM Ref #	Output Spindle	Ratio	Speed Max	Coolant Type	Drawing Index #
259.15906.000	M32-SER5 STR OFFSET 2 SPIN-ER16	KSC510BT	ER16	1:1	5000	None	17
259.15907.000	M32-SER5 90DEG EXT CLNT 2 SPINDLE-ER16	KSE201BT	ER16	1:1	5000	External	18



L16, L20, LC20-I, LC20-II, LC20-VII

DRIVEN TOOLS

Part Number	Description	OEM Ref #	Output Spindle	Ratio	Speed Max	Coolant Type	Drawing Index #
000.15700.000	90DEG SLITTING HOLDER 12MM PILOT	GSS510BT-12MM	12MM PILOT	1:1	9500	None	19
000.15964.000	90DEG SLITTING HOLDER 13MM PILOT	GSS510BT-13MM	13MM PILOT	1:1	9500	None	20
000.15182.000	STRAIGHT DRIVEN TOOL ER16	GSC510BT	ER16	1:1	9500	None	25
000.15172.000	90DEG DOUBLE END DRIVEN TOOL ER11	GSX510BT	ER11	1:1	9500	None	26

STATIC TOOLS

Part Number	Description	OEM Ref #	Drawing Index #
000.15558.000	FACE DRILLING SLEEVE HOLDER	GDF607BT	21

L25, L32 SERIES DRIVEN TOOLS

DRIVEN TOOLS

Part Number	Description	OEM Ref #	Output Spindle	Ratio	Speed Max	Coolant Type	Drawing Index #
000.15183.000	STRAIGHT DRIVEN TOOL ER16	GSC310BT	ER16	1:1	9500	None	22
000.15181.000	90DEG DOUBLE END DRIVEN TOOL ER11	GSX310BT	ER11	1:1	9500	None	23
000.15291.000	90DEG SLITTING HOLDER 10MM PILOT	-	10mm Pilot	1:1	9500	None	24

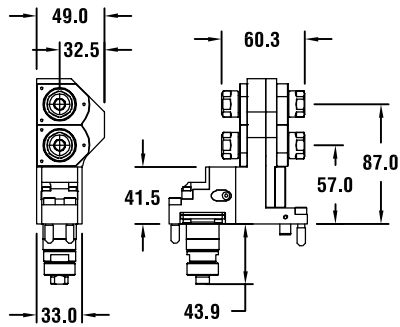
C16

DRIVEN TOOLS

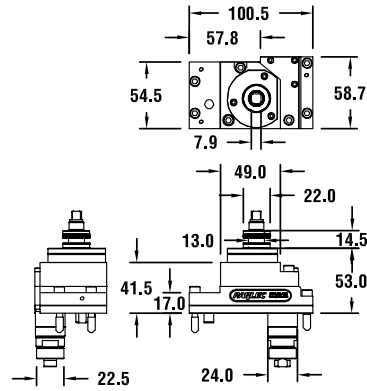
Part Number	DESCRIPTION	OEM REF #	OUTPUT SPINDLE	RATIO	SPEED MAX	COOLANT TYPE	Drawing Index #
258.15986.000	90DEG DOUBLE ENDER - 4,000 RPM	GSE707	ER11	1:1	9500	None	27



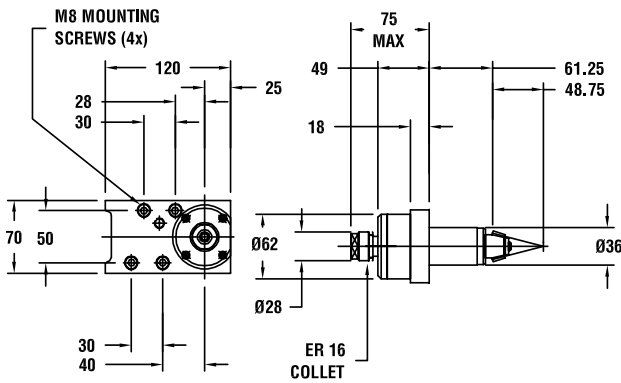
INDEX NUMBER: 1
GSE2007



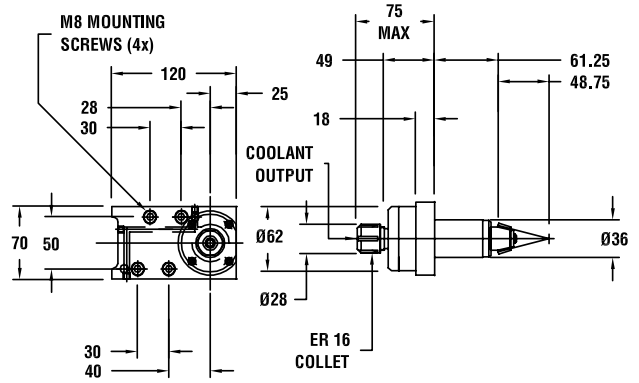
INDEX NUMBER: 2
GSS450



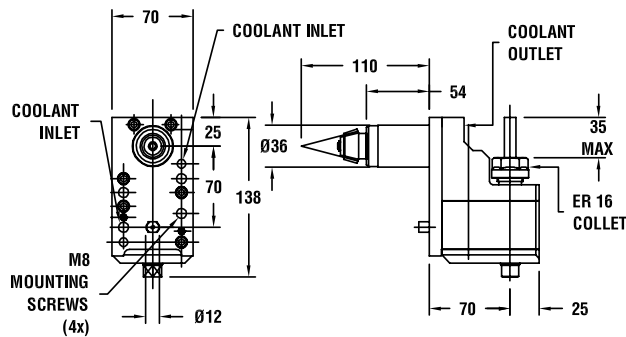
INDEX NUMBER: 3
259.15618.000



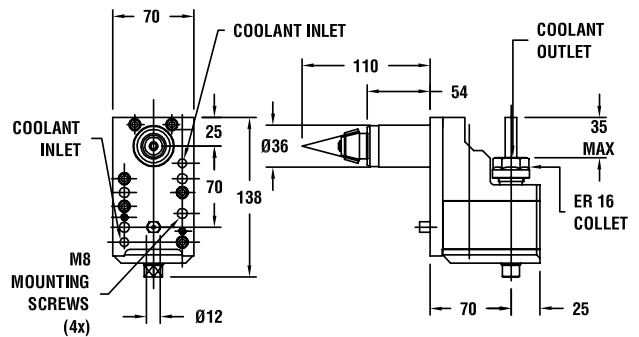
INDEX NUMBER: 4
259.15707.000



INDEX NUMBER: 5
259.15613.000

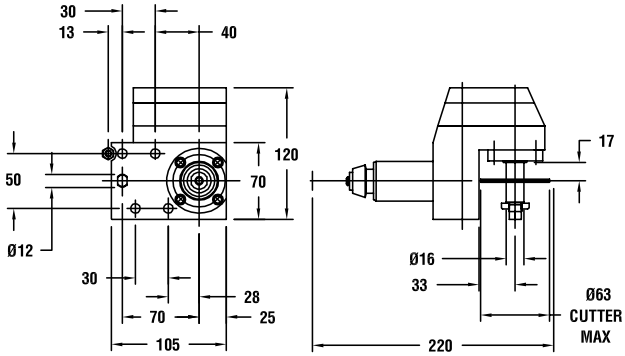


INDEX NUMBER: 6
259.15708.000

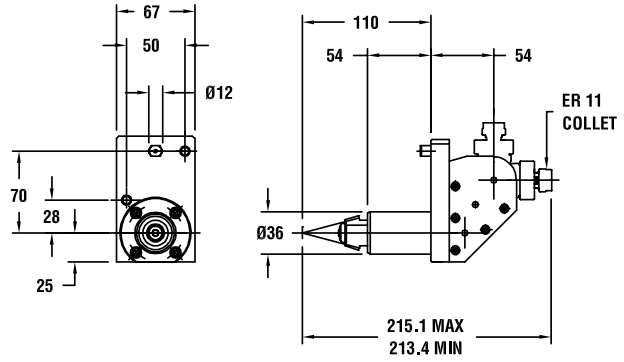




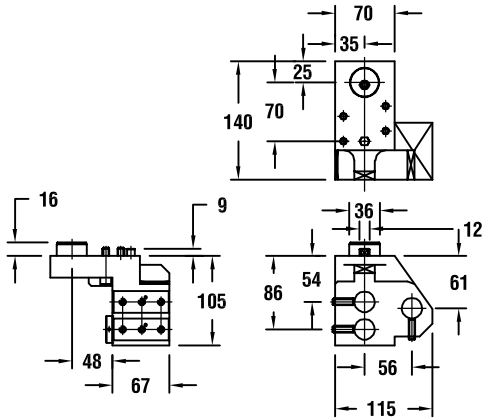
INDEX NUMBER: 7
259.15442.000



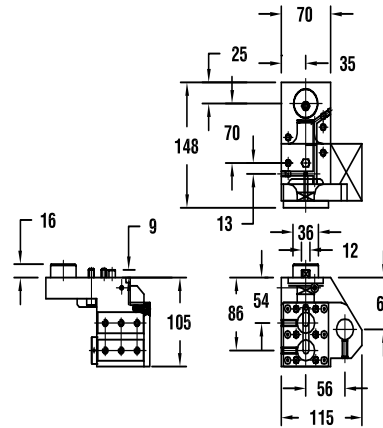
INDEX NUMBER: 8
259.15441.000



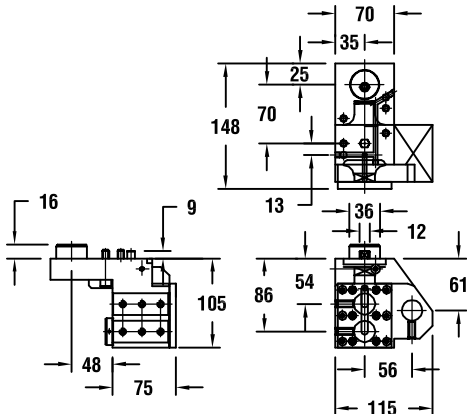
INDEX NUMBER: 9
259.15443.000



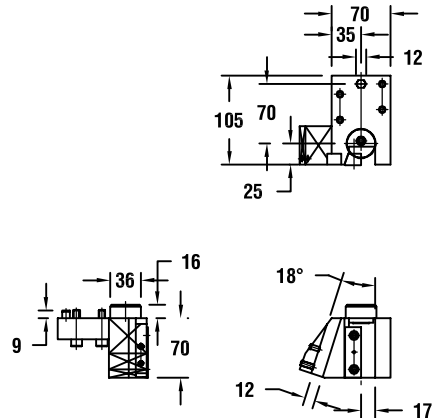
INDEX NUMBER: 10
259.74010.000



INDEX NUMBER: 11
259.15612.000

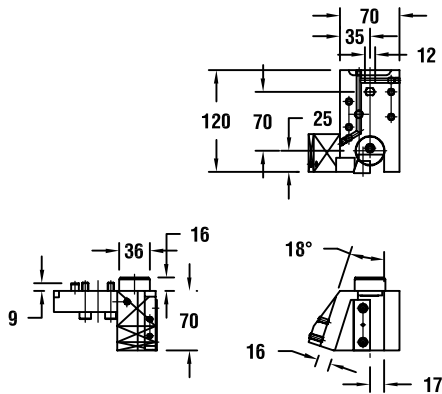


INDEX NUMBER: 12
259.15444.000

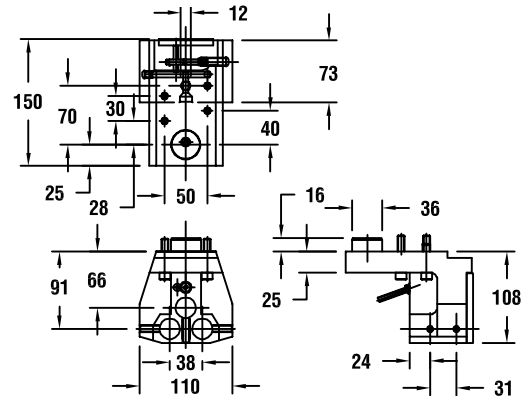


DRIVEN & STATIC

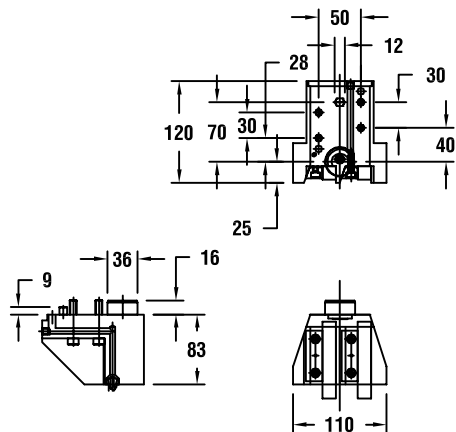
INDEX NUMBER: 13
259.15617.000



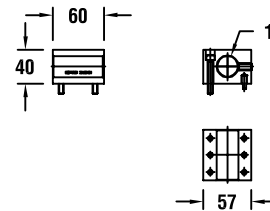
INDEX NUMBER: 14
259.15908.000



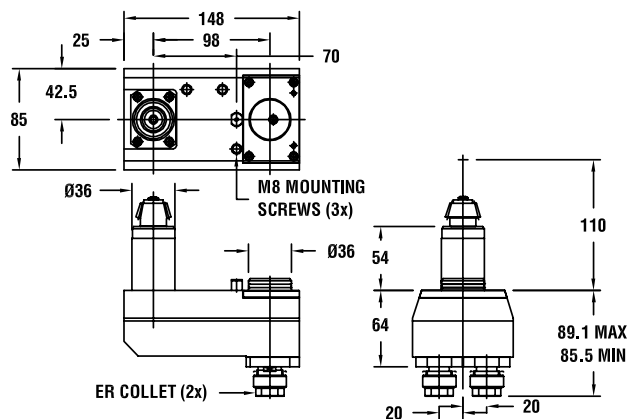
INDEX NUMBER: 15
259.15909.000



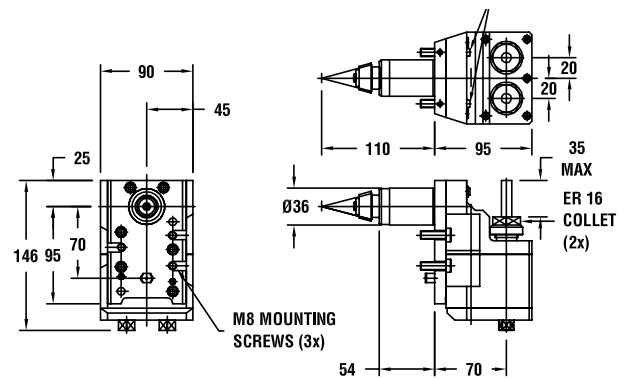
INDEX NUMBER: 16
259.15950.000



INDEX NUMBER: 17
259.15906.000

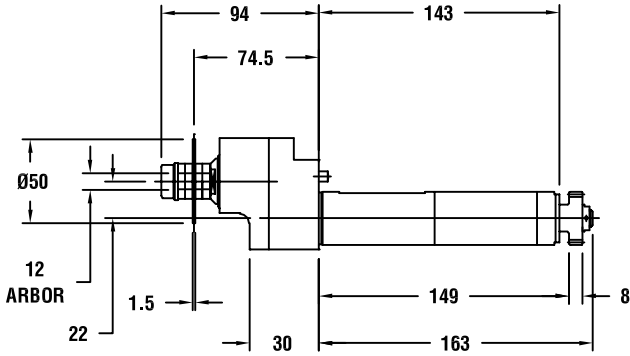


INDEX NUMBER: 18
259.15907.000

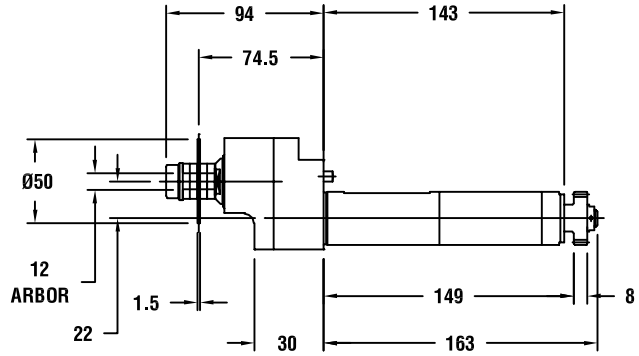




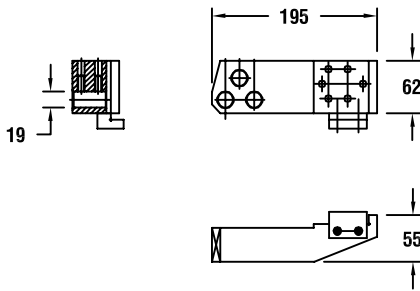
INDEX NUMBER: 19
000.15700.000



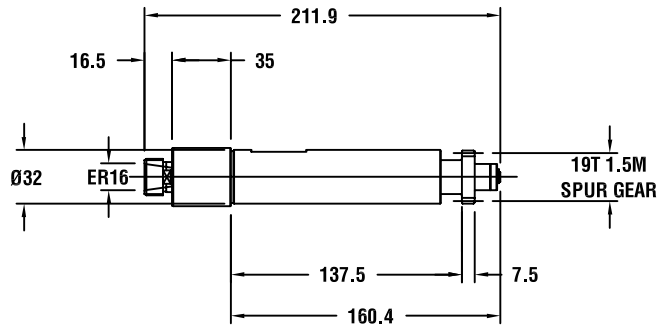
INDEX NUMBER: 20
000.15964.000



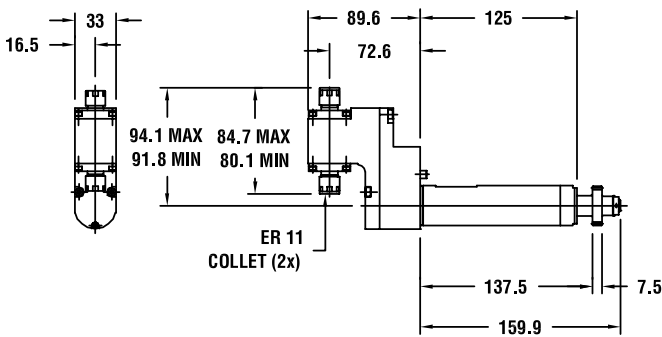
INDEX NUMBER: 21
000.15558.000



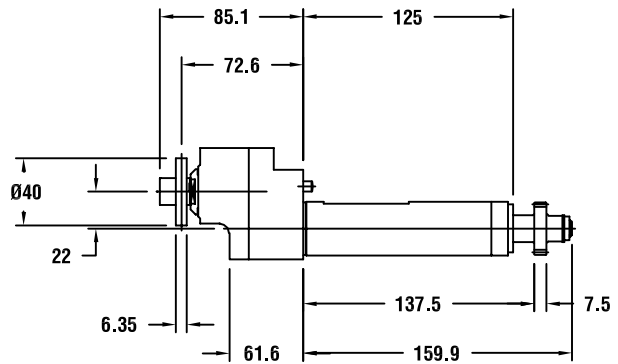
INDEX NUMBER: 22
000.15183.000



INDEX NUMBER: 23
000.15181.000



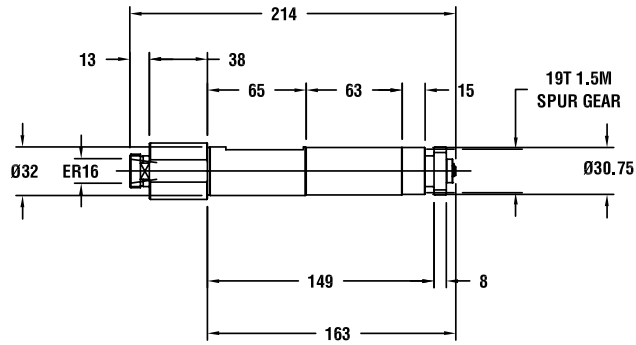
INDEX NUMBER: 24
000.15291.000



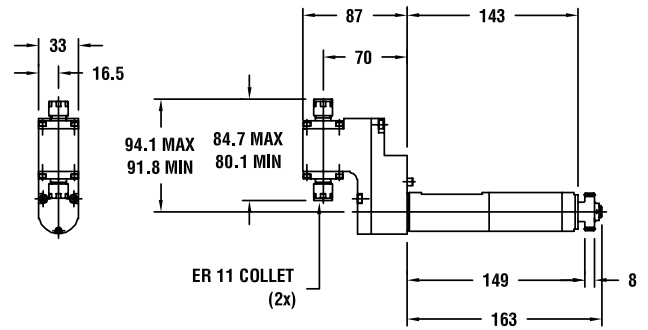
DRIVEN & STATIC



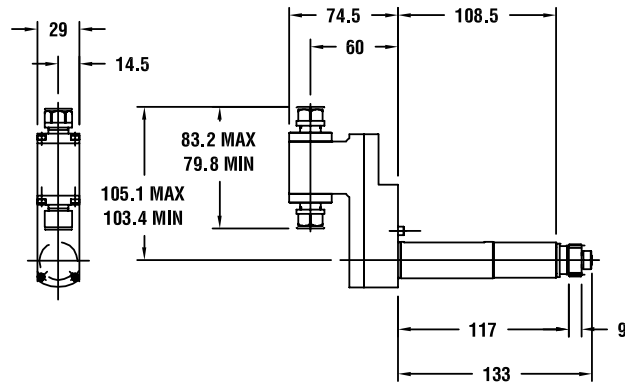
INDEX NUMBER: 25
000.15182.000



INDEX NUMBER: 26
000.15172.000



INDEX NUMBER: 27
258.15986.000





Notes



PUMA 230, 240, 1500, 2000, 2500, TT 1500, 1800

DRIVEN TOOLS

Part Number	Description	Output Spindle	Ratio	Speed Max	Coolant Type	Drawing Index #
311.15938.000	X-AXIS STR SHORT SWITCH T/CLNT ER25 6000R	ER25	1:1	6000	Internal & External	1
311.15939.000	X-AXIS STR LONG SWITCH T/LNT ER25 6000R	ER25	1:1	6000	Internal & External	2
311.15941.000	Z-AXIS SETBACK 90D SWITCH T/C ER25-6000R	ER25	1:1	6000	Internal & External	3
311.15942.000	Z-AXIS 90 DEG SWITCH T/CLNT ER25 6000RPM	ER25	1:1	6000	Internal & External	4

NOTE: 311.15939.000 will not fit in Puma 230 or 240.

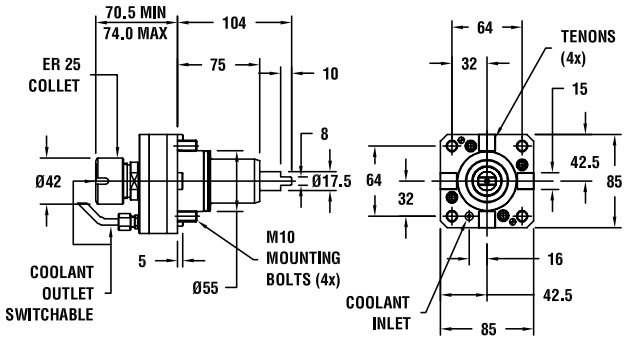
MX2000, 2500 & TT2000, 2500

DRIVEN TOOLS

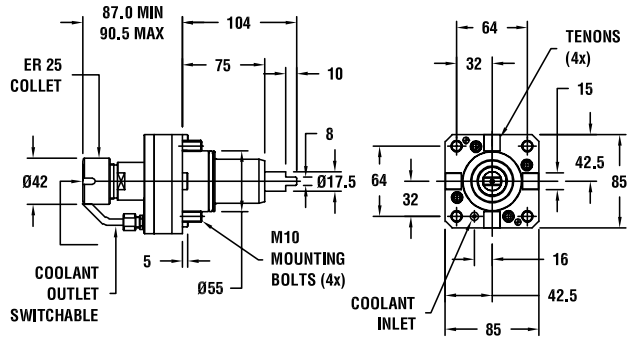
Part Number	Description	Output Spindle	Ratio	Speed Max	Coolant Type	Drawing Index #
313.10010.000	STRAIGHT EXT COOL - ER32 4000RPM	ER32	1:1	4000	External	5
313.10020.000	STRAIGHT THRU COOL - ER32 4000RPM	ER32	1:1	4000	Internal	6
313.20010.000	90-DEG EXT COOL - ER32 4000RPM	ER32	1:1	4000	External	7
313.20020.000	90-DEG THRU COOL - ER32 4000RPM	ER32	1:1	4000	Internal & External	8
313.60010.000	STR ARBOR TOOL EXT COOL-22MM 4000RPM	ER32	1:1	4000	External	9
313.60020.000	90-DEG ARBOR TOOL EXT COOL-22MM 4000RPM	ER32	1:1	4000	External	10



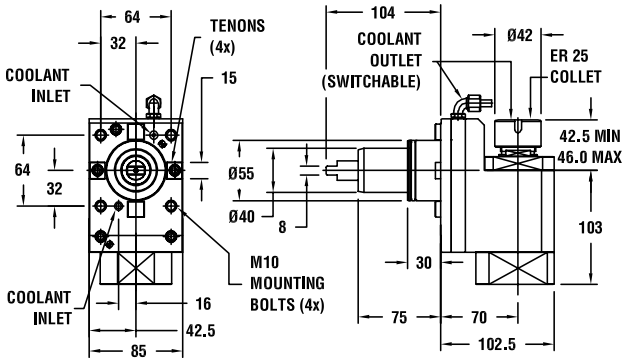
INDEX NUMBER: 1
311.15938.000



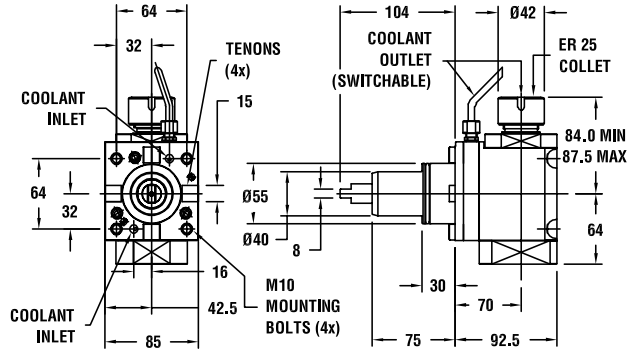
INDEX NUMBER: 2
311.15939.000



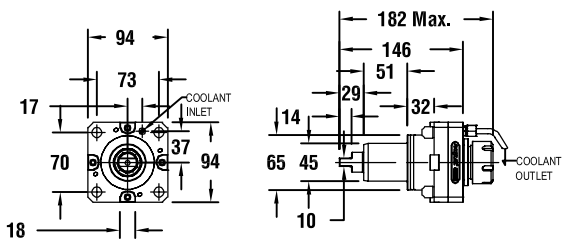
INDEX NUMBER: 3
311.15941.000



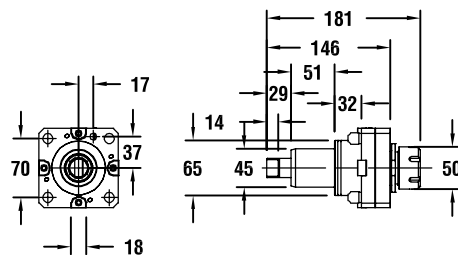
INDEX NUMBER: 4
311.15942.000



INDEX NUMBER: 5
313.10010.000

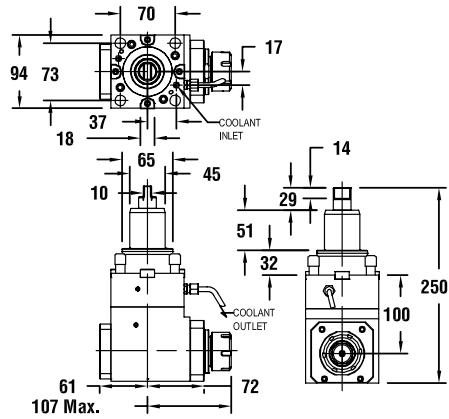


INDEX NUMBER: 6
313.10020.000

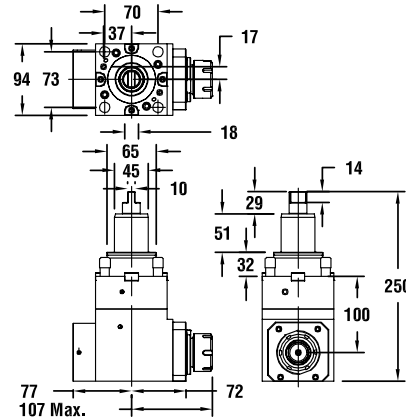




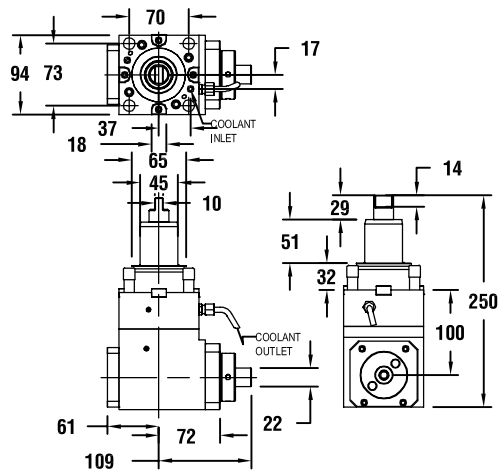
INDEX NUMBER: 7
313.20010.000



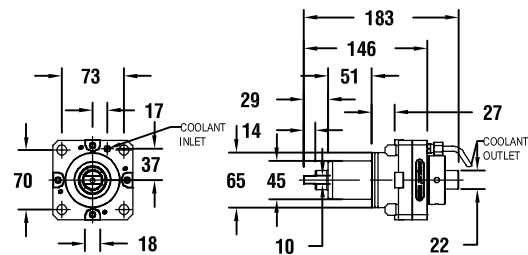
INDEX NUMBER: 8
313.20020.000



INDEX NUMBER: 9
313.60010.000



INDEX NUMBER: 10
313.60020.000





Notes



SL20, SL30, SL40 – STANDARD VDI TURRET

DRIVEN TOOLS

Part Number	Description	OEM Ref #	Output	Ratio	Speed Max	Coolant Type	Drawing Index #
59-0083	AXIAL TOOL 40VDI - VDI TURRET	59-0083	ER32	1:1	4500	External	1
59-0085	RADIAL TOOL 40VDI - VDI TURRET	59-0085	ER32	1:1	4500	External	2

STATIC TOOLS

Part number	Description	Drawing Index #
B2-40 X 1.000 X 44	1" Turning Tool HLDR R/H Short	-
B2-40 X 25 X 44	25mm Turning Tool HLDR R/H Short	-
B6-40 X 1.000 X 44	1" Turning Tool HLDR R/H Long	-
E2-40 X 1.250	Boring Bar Holder 1-1/4"	-
E2-40 X 20	Boring Bar Holder 20mm	-
E2-40 X 25	Boring Bar Holder 25mm	-
E2-40 X 30	Boring Bar Holder 30mm	-
E2-40 X 32	Boring Bar Holder 32mm	-
E2-40 X 40	Boring Bar Holder 40mm	-
VDI-THKIT	VDI STARTUP KIT: (2) Turning Tool Holder Short (1) Turning Tool Holder Long (3) Boring Bar Holders 1-1/4" ID (2) VDI40 Steel Turret Plugs	-

NOTE: Call for Outline Drawings

SL20, SL30 – HAAS TURRET

SL20, SL30, TL15, TL25 – HYBRID TURRET

SL40, TL15 – STANDARD VDI TURRET

DRIVEN TOOLS

Part Number	Description	OEM Ref #	Output	Ratio	Speed Max	Coolant Type	Drawing Index #
59-0082	AXIAL TOOL 40VDI - HAAS TURRET	59-0082	ER32	1:1	4500	External	3
59-0084	RADIAL TOOL 40VDI - HAAS TURRET	59-0084	ER32	1:1	4500	External	4
371.15859.000	HAAS ADAPTER PLATE CONVERTS VDI40 TO HAAS TURRET	-	-	-	-	-	-

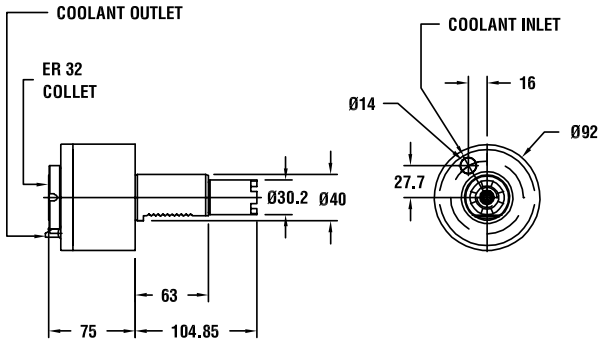
SL40 – HYBRID & HAAS TURRET

DRIVEN TOOLS

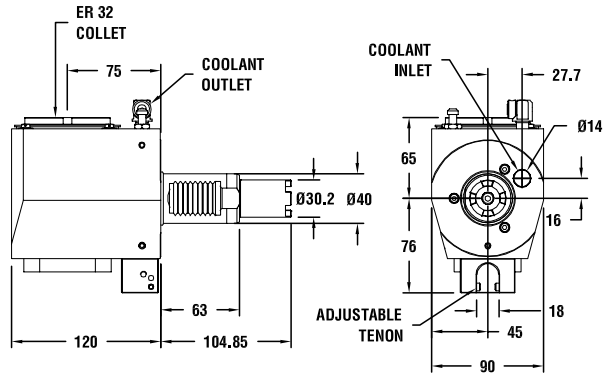
Part Number	Description	OEM Ref #	Output	Ratio	Speed Max	Coolant Type	Drawing Index #
59-6352	AXIAL TOOL 40VDI - HAAS TURRET	59-6352	ER32	1:1	4500	External	5
59-6353	RADIAL TOOL 40VDI - HAAS TURRET	59-6353	ER32	1:1	4500	External	6



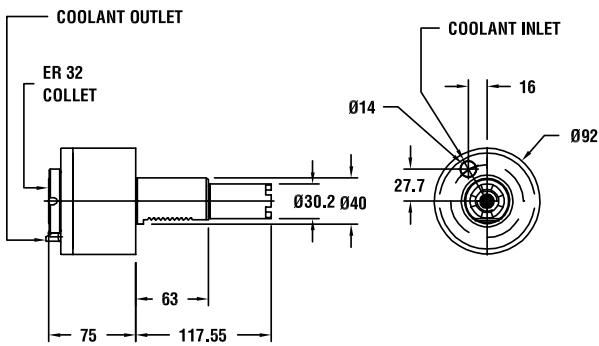
INDEX NUMBER: 1
59-0083



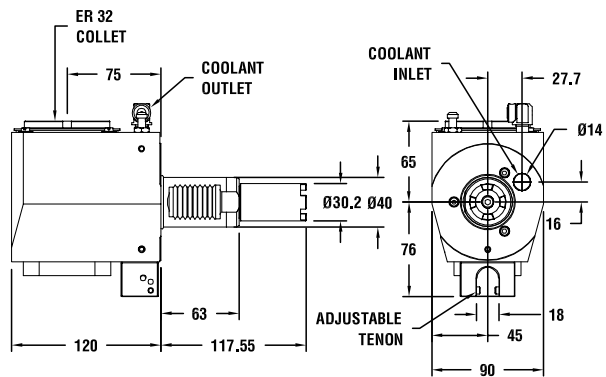
INDEX NUMBER: 2
59-0085



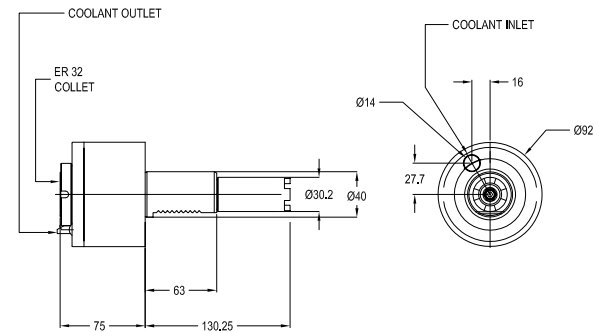
INDEX NUMBER: 3
59-0082



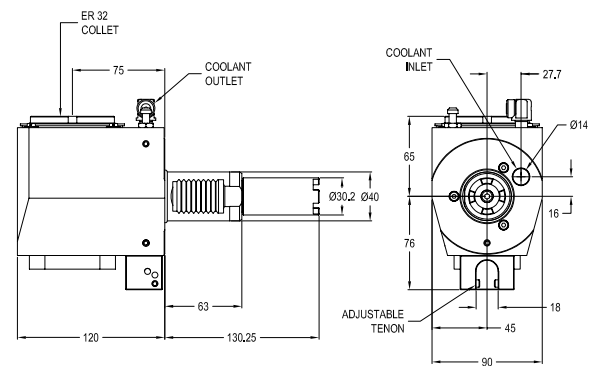
INDEX NUMBER: 4
59-0084



INDEX NUMBER: 5
59-6352



INDEX NUMBER: 6
59-6353



DRIVEN & STATIC



MP410, MP610, MP615, MP6100 MP620, MP625, MP6200, MP6250 – 16 STATION TURRET HYPER QUADREX MP6100 150MSY

DRIVEN TOOLS

Part Number	Description	OEM Ref #	Output Spindle	Ratio	Speed Max	Coolant Type	Drawing Index #
319.15681.000	V-SHIFT M/D ER25 4500RPM	53178000100 - 53568005100	ER25	1:1	4500	External	1
319.15676.000	V-SHIFT M/D ER25 6000RPM	53178000300	ER25	1:1	6000	External	2
319.15660.000	H-90DEG M/D ER25 4500RPM	53178000200 - 53568005000	ER25	1:1	4500	External	3
319.15661.000	H-90DEG M/D ER25 6000RPM	53178000400	ER25	1:1	6000	External	4

MP420, MP620, MP625, MP6200, MP6250 – 12 STATION TURRET

DRIVEN TOOLS

Part Number	Description	OEM Ref #	Output Spindle	Ratio	Speed Max	Coolant Type	Drawing Index #
309.15682.000	V-SHIFT 12ST-T M/D ER32 4500RPM	53278000101	ER32	1:1	4500	External	5
309.15673.000	V-SHIFT 12ST-T M/D ER32 6000RPM	53278000301	ER32	1:1	6000	External	6
309.15663.000	H-90DEG 12ST-T M/D ER32 4500RPM	53278000201	ER32	1:1	4500	External	7
309.15668.000	H-90DEG 12ST-T M/D ER32 6000RPM	53278000401	ER32	1:1	6000	External	8

STATIC TOOLS

Part Number	Description	Drawing Index #
53478000200	FWD (R/H) TURNING TOOL HLDR 25MM X 25MM	9
53478005200	FWD (R/H) TURNING TOOL HLDR 1" X 1"	10
53478000100	REV (L/H) TURNING TOOL HLDR 25MM X 25MM	11
53478005100	REV (L/H) TURNING TOOL HLDR 1" X 1"	12
53478000500	FACING TOOL HLDR 25MM X 25MM	13
53478005500	FACING TOOL HLDR 1" X 1"	14
53478000900	CUT-OFF HLDR (R/H) FWD	15
53478000400	BORING BAR HLDR 25MM (MP620)	16
53178002100	BORING BAR HLDR 40MM (MP620)	17
53478005400	BORING BAR HLDR 1" (MP620)	18
53478005300	BORING BAR HLDR 1-1/2" (MP620)	19
53178002200	U' DRILL HLDR 40MM (MP620)	20
53478000700	USE 53178002200	20
53578005700	USE 53178002200	20
53478000801	TURRET CAP	21



MP630, MP6300, MP430, MP4300

DRIVEN TOOLS

Part Number	Description	OEM Ref #	Output Spindle	Ratio	Speed Max	Coolant Type	Drawing Index #
198.13569.000	Use 198.15829.000-Direct Replacement	53488010102	-	-	-	-	22
198.15829.000	V-STRAIGHT M/D DIN40M 4000RPM	53288001600	DIN40 TAPER	1:1	4000	External	22
198.15831.000	Use 198.15833.000-Direct Replacement	53488020102	-	-	-	-	22
198.15833.000	V-STRAIGHT M/D ISO40 4000RPM	53288001700	ISO40 TAPER	1:1	4000	External	22
198.13568.000	Use 198.15830.000-Direct Replacement	53488010202	-	-	-	-	23
198.15830.000	H-90DEG M/D DIN40M 4000RPM	53288000100	DIN40 TAPER	1:1	4000	External	23
198.15832.000	Use 198.15834.000-Direct Replacement	53488020202	-	-	-	-	23
198.15834.000	H-90DEG M/D ISO40 4000RPM	53288000200	ISO40 TAPER	1:1	4000	External	23
198.14021.000	H-90DEG T/COOL M/D ER40 4000RPM	-	ER40	1:1	4000	Internal	24

STATIC TOOLS

Part Number	Description	Drawing Index #
53488001101	FWD (R/H) TURNING TOOL HLDR 25MM X 25MM	25
53488006101	FWD (R/H) TURNING TOOL HLDR 1" X 1"	26
53488001001	REV (L/H) TURNING TOOL HLDR 25MM X 25MM	27
53488006001	REV (L/H) TURNING TOOL HLDR 1" X 1"	28
53488001401	FACING TOOL HLDR 25MM X 25MM	29
53488006401	FACING TOOL HLDR 1" X 1"	30
53488001601	CUT-OFF HLDR	31
53488001201	BORING BAR HLDR 50MM	32
53488001301	BORING BAR HLDR 32MM	33
53488006201	BORING BAR HLDR 2"	34
53488006301	BORING BAR HLDR 1-1/4"	35
53488001801	U' DRILL HLDR 40MM	36
53488001700	TURRET CAP	37



QTN NEXUS 100, SQT 10, SQT 100 – 12 STATION TURRET SQT 15, SQT 18, SQT 200, SQT 250 – 16 STATION TURRET

DRIVEN TOOLS

Part Number	Description	OEM Ref #	Output Spindle	Ratio	Speed Max	Coolant Type	Drawing Index #
197.13668.000	V-STRAIGHT M/D ER25 6000RPM	53528010202	ER25	1:1	6000	External	38
191.15683.000	V-SHIFT M/D ER25 4500RPM	53528010702 - 53108020100	ER25	1:1	4500	External	39
191.15684.000	V-SHIFT M/D ER25 6000RPM	53248030200	ER25	1:1	6000	External	40
191.15666.000	H-90DEG M/D ER25 4500RPM	53108020200 - 53528010102	ER25	1:1	4500	External	41
191.15667.000	H-90DEG M/D ER25 6000RPM	532480303000	ER25	1:1	6000	External	42
197.14087.000	H-90DEG 1:1 RATIO BACK M/D ER25	53548010301 - 53108020300	ER25	1:1	4500	External	43
197.14208.000	H-90DEG DOUBLE END M/D ER25	-	ER25	1:1	3000	External	44
191.14803.000	H-90DEG DOUBLE END M/D ER25 4500RPM	-	ER25	1:1	4500	External	45

STATIC TOOLS

Part Number	Description	Drawing Index #
53518000101	FWD (R/H) TURNING TOOL HLDR 20MM X 20MM	46
53518010100	FWD (R/H) TURNING TOOL HLDR 3/4" X 3/4"	47
53518000701	REV (L/H) TURNING TOOL HLDR 20MM X 20MM	48
53518010700	REV (L/H) TURNING TOOL HLDR 3/4" X 3/4"	49
53538000101	DOUBLE TURNING TOOL HLDR 20MM X 20MM	50
53538010100	DOUBLE TURNING TOOL HLDR 3/4" X 3/4"	51
53518000301	FACING TOOL HLDR 20MM X 20MM	52
53518010300	FACING TOOL HLDR 3/4" X 3/4"	53
53518000401	CUT-OFF HLDR	54
53518000201	BORING BAR HLDR 32MM	55
53108005100	USE 53518000201	55
53518010200	BORING BAR HLDR 1-1/4"	56
53538000201	DOUBLE BORING BAR HLDR 2 X 20MM	57
53538010200	DOUBLE BORING BAR HLDR 2 X 3/4"	58
53518000501	U' DRILL HLDR 32MM	59
53518010500	USE 53518000501	59
53108005200	USE 53518000501	59
53518000600	TURRET CAP	60



QTN NEXUS 200, NEXUS 250 SERIES SQT 15, SQT 18, SQT 200, SQT 250 – 12 STATION TURRET

DRIVEN TOOLS

Part Number	Description	OEM Ref #	Ratio	Speed Max	Coolant Type	Output Spindle	Drawing Index #
190.15675.000	V-SHIFT 12ST-T M/D ER25 6000RPM	53628010200	1:1	6000	External	ER25	61
190.15685.000	V-SHIFT 12ST-T M/D ER32 4500R	53208020102 53628010801	1:1	4500	External	ER32	62
190.15674.000	V-SHIFT 12ST-T M/D ER32 6000R	53208030401	1:1	6000	External	ER32	63
190.15665.000	H-90DEG 12ST-T M/D ER25 4500RPM	53628010101	1:1	4500	External	ER25	64
190.15670.000	H-90DEG 12ST-T M/D ER25 6000RPM	53208030501	1:1	6000	External	ER25	65
190.15671.000	H-90DEG 12ST-T M/D ER32 4500RPM	53208020202 53628010701	1:1	4500	External	ER32	66
190.15669.000	H-90DEG 12ST-T M/D ER32 6000RPM	-	1:1	6000	External	ER32	67
190.14718.000	H-90DEG 12ST-T 1:1 R BACK M/D ER32 6000	53208021000 53468010701	1:1	6000	External	ER32	68
190.14724.000	H-90DEG 12ST-T DOUBLE END M/D ER32 4500R	53628011000	1:1	4500	External	ER32	69
190.14823.000	H-90DEG 12ST-T DOUBLE END M/D ER32 6000R	53208011600 53628011000	1:1	6000	External	ER32	69
196.13989.000	AOJ 12ST-T 0-90 DEGREE-ER25	-	5:3	4500IN 7500OUT	External	ER25	70
190.10020.000	V-SHIFT SUPAMIL-ER32 T/COOL 4500R	-	1:1	4500	Internal	ER32	71
190.90010.000	V-SHIFT SUPAMIL-ER32 1.5:1 RATIO SPEEDER	-	1.5:1	4500IN 6750OUT	External	ER32	72
190.20010.000	H-90DEG SUPAMIL-ER32 T/COOL 4500R	-	1:1	4500	Internal	ER32	73
190.90020.000	H-90DEG SUPAMIL-ER32 1.5:1 RATIO SPEEDER	-	1.5:1	4500IN 6750OUT	External	ER32	74

STATIC TOOLS

Part Number	Description	Drawing Index #
53618000100	FWD (R/H) TURNING TOOL HLDR 25MM X 25MM	75
53618010100	FWD (R/H) TURNING TOOL HLDR 1" X 1"	76
53618000600	REV (L/H) TURNING TOOL HLDR 25MM X 25MM	77
53618010600	REV (L/H) TURNING TOOL HLDR 1" X 1"	78
53638000300	DOUBLE TURNING TOOL HLDR 25MM X 25MM	79
53638010300	DOUBLE TURNING TOOL HLDR 1" X 1"	80
53618000300	FACING TOOL HLDR 25MM X 25MM	81
53618010300	FACING TOOL HLDR 1" X 1"	82
53618000400	CUT-OFF HLDR	83
53208005100	BORING BAR HLDR 40MM (SQT200)	84
53618000200	USE 53208005100	84
53208015100	BORING BAR HLDR 1-1/2"	85
53618010200	USE 53208015100	85
53638000400	DOUBLE BORING BAR HLDR 2 X 25MM	86
53638010400	DOUBLE BORING BAR HLDR 2 X 1"	87
53208005200	U' DRILL HLDR 40MM (SQT200)	88
53618000500	USE 53208005200	88
53618010500	USE 53208005200	88
53208015200	USE 53208005200	88
53518000600	TURRET CAP	89



QTN NEXUS 300, NEXUS 350, NEXUS 400, NEXUS 450 SERIES SQT 28, SQT 30, SQT 300

DRIVEN TOOLS

Part Number	Description	OEM Ref #	Output Spindle	Ratio	Speed Max	Coolant Type	Drawing Index #
222.15653.000	V-STRAIGHT M/D DIN40M 4000RPM	53308020604 - 53828002002	DIN40 TAPER	1:1	4000	External	90
222.15656.000	V-STRAIGHT M/D ISO40 4000RPM	53308020501 - 53828001002	ISO40 TAPER	1:1	4000	External	90
222.15654.000	H-90DEG M/D DIN40M 4000RPM	53308020101	DIN40 TAPER	1:1	4000	External	91
222.15658.000	H-90DEG M/D ISO40 4000RPM	53308020201	ISO40 TAPER	1:1	4000	External	91

STATIC TOOLS

Part Number	Description	Drawing Index #
53308010200	BORING BAR HLDR 2"	92
53818010200	USE 53308010200-DIRECT REPLACEMENT	92
53818000201	USE 53308000201-DIRECT REPLACEMENT	93
53308000201	BORING BAR HLDR 50MM	93
53308000401	CUT-OFF HLDR	94
53818000401	USE 53308000401-DIRECT REPLACEMENT	94
53838010900	DOUBLE BORING BAR HLDR 1-1/4"	95
53838000901	DOUBLE BORING BAR HLDR 32MM	96
53838010800	DOUBLE TURNING TOOL HLDR 1" X 1"	97
53838000801	DOUBLE TURNING TOOL HLDR 25MM X 25MM	98
53308010300	FACING TOOL HLDR 1" X 1"	99
53818010300	USE 53308010300-DIRECT REPLACEMENT	99
53308000301	FACING TOOL HLDR 25MM X 25MM	100
53818000301	USE 53308000301-DIRECT REPLACEMENT	100
53308010100	FWD (R/H) TURNING TOOL HLDR 1" X 1"	101
53818010100	USE 53308010100-DIRECT REPLACEMENT	101
53308000101	FWD (R/H) TURNING TOOL HLDR 25MM X 25MM	102
53818000101	USE 53308000101-DIRECT REPLACEMENT	102
53308010600	REV (L/H) TURNING TOOL HLDR 1" X 1"	103
53818010600	USE 53308010600-DIRECT REPLACEMENT	103
53308000601	REV (L/H) TURNING TOOL HLDR 25MM X 25MM	104
53818000601	USE 53308000601-DIRECT REPLACEMENT	104
53818000701	TURRET CAP	105
53308000501	U' DRILL HLDR 40MM	106
53818000501	USE 53308000501-DIRECT REPLACEMENT	106
53818010500	USE 53308000501-DIRECT REPLACEMENT	106
53308010500	USE 53308000501-DIRECT REPLACEMENT	106
53688010100	REV (L/H) TURNING TOOL HLDR 1-1/4" X 1-1/4"	107
53688000100	REV (L/H) TURNING TOOL HLDR 32MM X 32MM	108
53688010200	FWD (R/H) TURNING TOOL HLDR 1-1/4" X 1-1/4"	109
53688000200	FWD (R/H) TURNING TOOL HLDR 32MM X 32MM	110
53688010300	FACING TOOL HLDR 1-1/4" X 1-1/4"	111
53688000300	FACING TOOL HLDR 32MM X 32MM	112



SOCKETS

Part Number	Description
51378001200	BORING BAR SOCKET 40MM X 25MM
51378001300	BORING BAR SOCKET 40MM X 20MM
51378001400	BORING BAR SOCKET 40MM X 16MM
51378001500	BORING BAR SOCKET 40MM X 12MM
51378001600	BORING BAR SOCKET 40MM X 10MM
51378001700	BORING BAR SOCKET 40MM X 8MM
51378001102	BORING BAR SOCKET 40MM X 32MM
51488001300	BORING BAR SOCKET 50MM X 20MM
51488001400	BORING BAR SOCKET 50MM X 16MM
51488001600	BORING BAR SOCKET 50MM X 12MM
51488001700	BORING BAR SOCKET 2" X 7/8"
51488001800	BORING BAR SOCKET 2" X 3/4"
51488001900	BORING BAR SOCKET 2" X 5/8"
51488002100	BORING BAR SOCKET 2" X 1/2"
53418001602	BORING BAR SOCKET 40MM X 32MM
53418001702	BORING BAR SOCKET 40MM X 25MM
53418001802	BORING BAR SOCKET 40MM X 20MM
53418001902	BORING BAR SOCKET 40MM X 16MM
53418002002	BORING BAR SOCKET 40MM X 12MM
53418002102	BORING BAR SOCKET 40MM X 10MM
53418002202	BORING BAR SOCKET 40MM X 8MM
53418003100	DRILL SOCKET 40MM X 3MT
53418003200	DRILL SOCKET 40MM X 2MT
53418003300	DRILL SOCKET 40MM X 1MT
53418003401	U' DRILL SOCKET 40MM X 32MM
53418003501	U' DRILL SOCKET 40MM X 25MM
53418003601	U' DRILL SOCKET 40MM X 20MM
53418011602	BORING BAR SOCKET 1-1/2" X 1-1/4"
53418011702	BORING BAR SOCKET 1-1/2" X 1"
53418011802	BORING BAR SOCKET 1-1/2" X 3/4"
53418011902	BORING BAR SOCKET 1-1/2" X 5/8"
53418012002	BORING BAR SOCKET 1-1/2" X 1/2"
53418012102	BORING BAR SOCKET 1-1/2" X 3/8"
53418012202	BORING BAR SOCKET 1-1/2" X 5/16"
53418013100	DRILL SOCKET 1-1/2" X 3MT
53418013200	DRILL SOCKET 1-1/2" X 2MT
53418013300	DRILL SOCKET 1-1/2" X 1MT
53428000200	BORING BAR SOCKET 50MM X 40MM
53428000400	BORING BAR SOCKET 50MM X 32MM
53428000500	BORING BAR SOCKET 50MM X 25MM
53428001500	DRILL SOCKET 50MM X 4MT
53428001600	DRILL SOCKET 50MM X 3MT
53428001700	DRILL SOCKET 50MM X 2MT
53428001900	BORING BAR SOCKET 2" X 1-3/4"
53428002000	BORING BAR SOCKET 2" X 1-1/2"
53428002100	BORING BAR SOCKET 2" X 1-1/4"
53428002200	BORING BAR SOCKET 2" X 1"
53428003100	DRILL SOCKET 2" X 4MT
53428003200	DRILL SOCKET 2" X 3MT

DRIVEN & STATIC

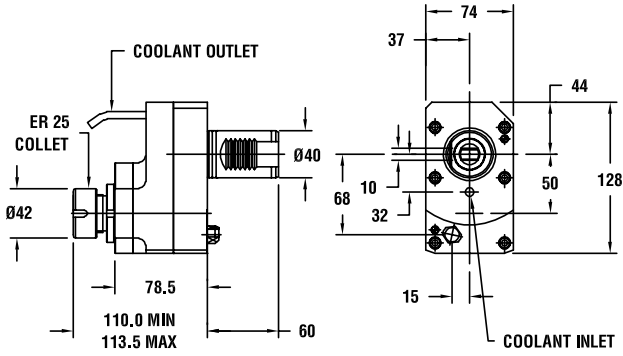


SOCKETS

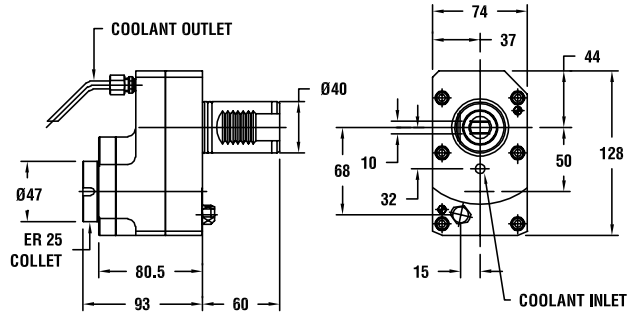
Part Number	Description
53428003300	DRILL SOCKET 2" X 2MT
53448001600	USE 53468001300 - DIRECT REPLACEMENT
53448001700	USE 53468001400 - DIRECT REPLACEMENT
53448001800	USE 53468001500 - DIRECT REPLACEMENT
53448001900	USE 53468001600 - DIRECT REPLACEMENT
53448002000	USE 53468001700 - DIRECT REPLACEMENT
53448002100	DRILL SOCKET 25MM X 1MT
53448002200	DRILL SOCKET 25MM X 2MT
53448011600	USE 53468006300 - DIRECT REPLACEMENT
53448011700	USE 53468006400 - DIRECT REPLACEMENT
53448011800	USE 53468006500 - DIRECT REPLACEMENT
53448011900	USE 53468006600 - DIRECT REPLACEMENT
53448012000	USE 53468006700 - DIRECT REPLACEMENT
53468001300	BORING BAR SOCKET 25MM X 8MM
53468001400	BORING BAR SOCKET 25MM X 10MM
53468001500	BORING BAR SOCKET 25MM X 12MM
53468001600	BORING BAR SOCKET 25MM X 16MM
53468001700	BORING BAR SOCKET 25MM X 20MM
53468006300	BORING BAR SOCKET 1" X 5/16"
53468006400	BORING BAR SOCKET 1" X 3/8"
53468006500	BORING BAR SOCKET 1" X 1/2"
53468006600	BORING BAR SOCKET 1" X 5/8"
53468006700	BORING BAR SOCKET 1" X 3/4"
53518002000	BORING BAR SOCKET 32MM X 25MM
53518002100	BORING BAR SOCKET 32MM X 20MM
53518002200	BORING BAR SOCKET 32MM X 16MM
53518002300	BORING BAR SOCKET 32MM X 12MM
53518002400	BORING BAR SOCKET 32MM X 10MM
53518002500	BORING BAR SOCKET 32MM X 8MM
53518003000	DRILL SOCKET 32MM X 1MT
53518003100	DRILL SOCKET 32MM X 2MT
53518003200	U DRILL SOCKET 32MM X 25MM
53518003300	U DRILL SOCKET 32MM X 20MM
53518012000	BORING BAR SOCKET 1-1/4" X 1"
53518012100	BORING BAR SOCKET 1-1/4" X 3/4"
53518012200	BORING BAR SOCKET 1-1/4" X 5/8"
53518012300	BORING BAR SOCKET 1-1/4" X 1/2"
53518012400	BORING BAR SOCKET 1-1/4" X 3/8"
53518012500	BORING BAR SOCKET 1-1/4" X 5/16"
53518013000	DRILL SOCKET 1-1/4" X 1MT
53518013100	DRILL SOCKET 1-1/4" X 2MT
53538002000	BORING BAR SOCKET 20MM X 16MM
53538002100	BORING BAR SOCKET 20MM X 12MM
53538002200	BORING BAR SOCKET 20MM X 10MM
53538002300	BORING BAR SOCKET 20MM X 8MM
53538012000	BORING BAR SOCKET 3/4" X 5/8"
53538012100	BORING BAR SOCKET 3/4" X 1/2"
53538012200	BORING BAR SOCKET 3/4" X 3/8"
53538012300	BORING BAR SOCKET 3/4" X 5/16"



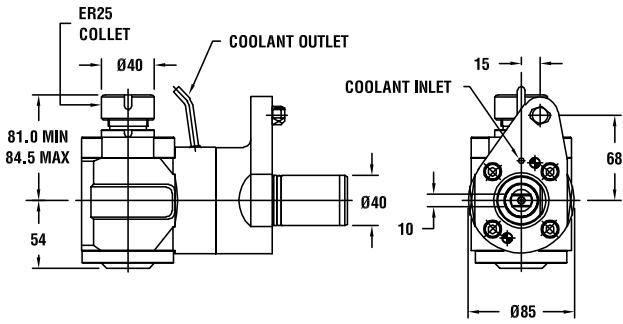
INDEX NUMBER: 1
319.15681.000



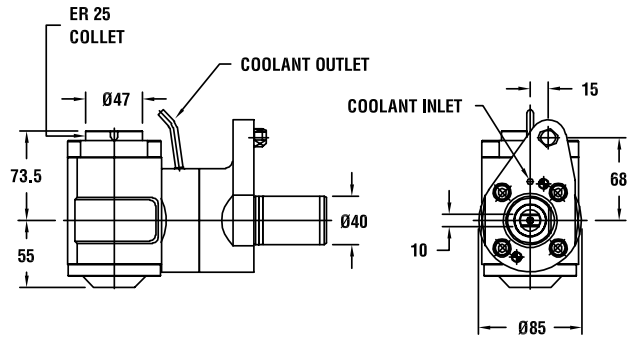
INDEX NUMBER: 2
319.15676.000



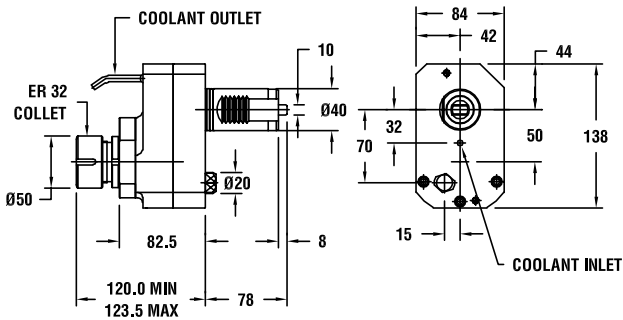
INDEX NUMBER: 3
319.15660.000



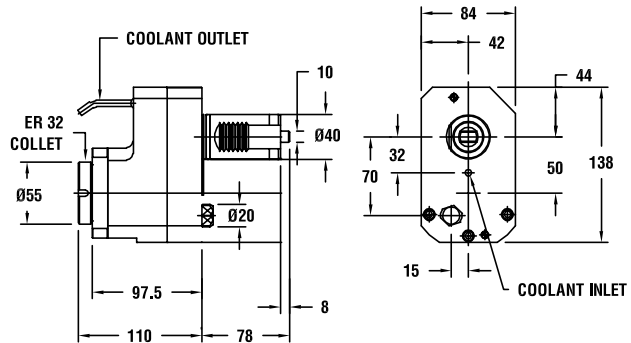
INDEX NUMBER: 4
319.15661.000



INDEX NUMBER: 5
309.15682.000



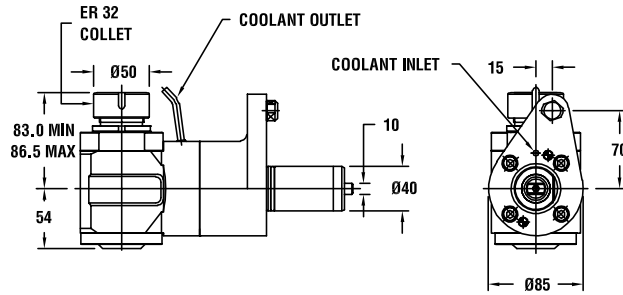
INDEX NUMBER: 6
309.15673.000



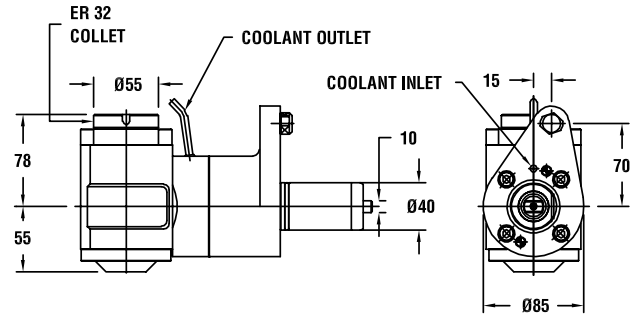
DRIVEN & STATIC



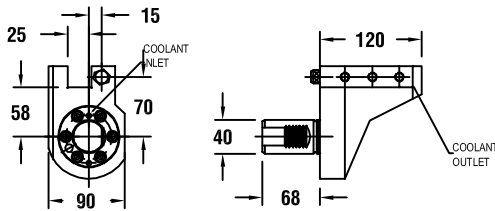
INDEX NUMBER: 7
309.15663.000



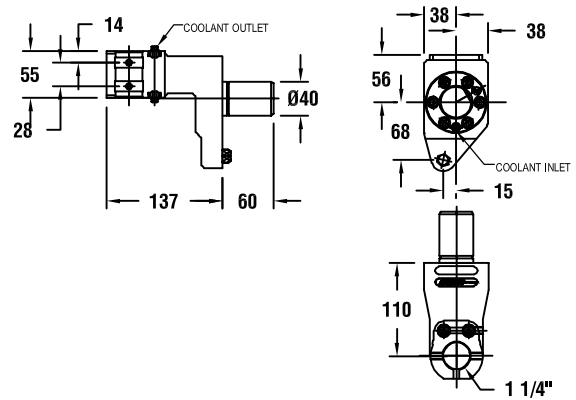
INDEX NUMBER: 8
309.15668.000



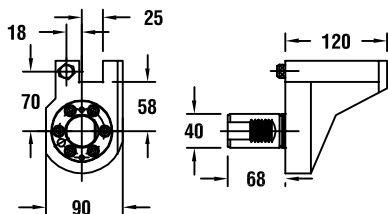
INDEX NUMBER: 9
53478000200



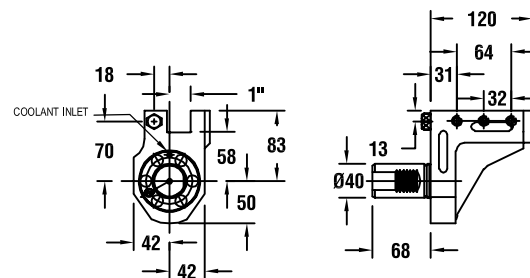
INDEX NUMBER: 10
5347800200



INDEX NUMBER: 11
53478000100

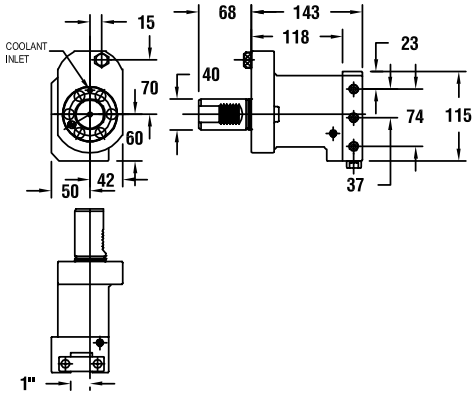


INDEX NUMBER: 12
53478005100

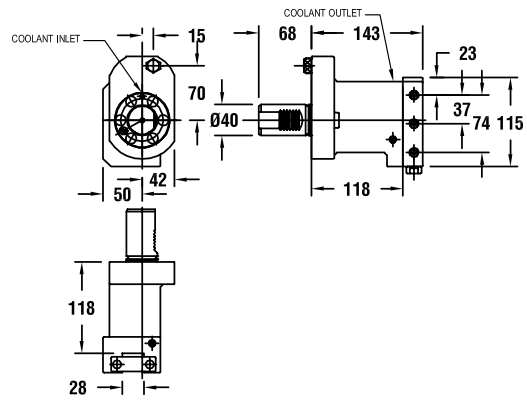




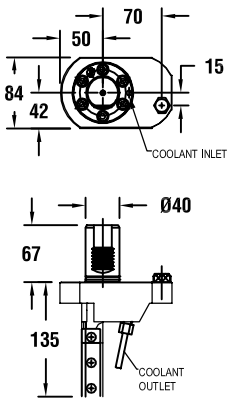
INDEX NUMBER: 13
53478000500



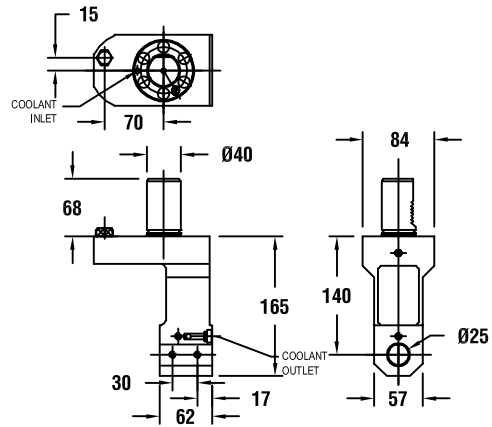
INDEX NUMBER: 14
53478005500



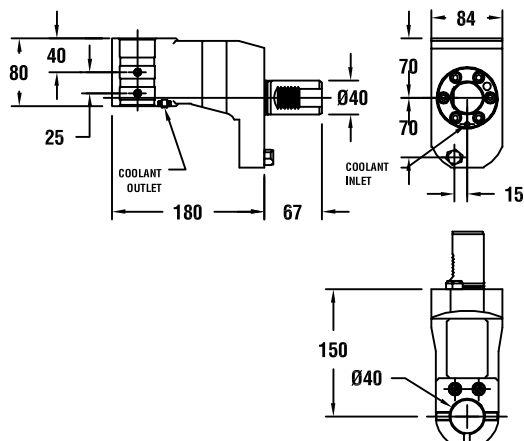
INDEX NUMBER: 15
53478000900



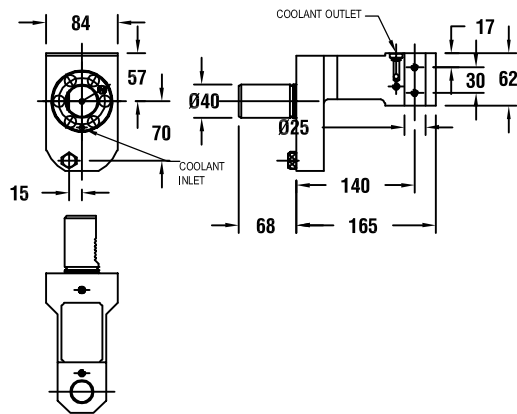
INDEX NUMBER: 16
53478000400



INDEX NUMBER: 17
53478002100

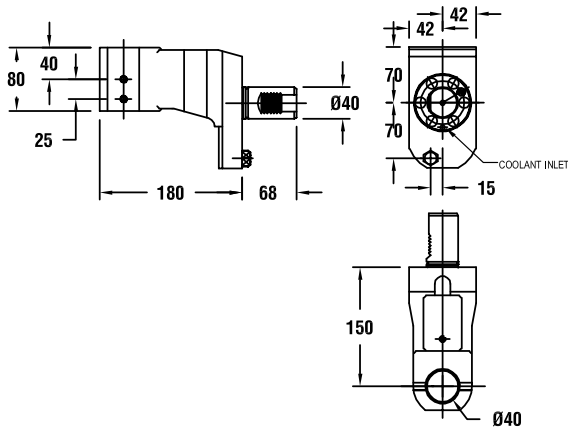


INDEX NUMBER: 18
53478005400

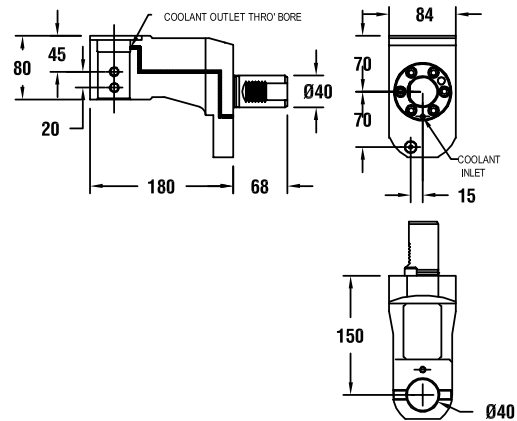


DRIVEN & STATIC

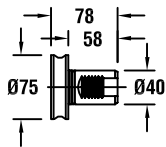
INDEX NUMBER: 19
53478005300



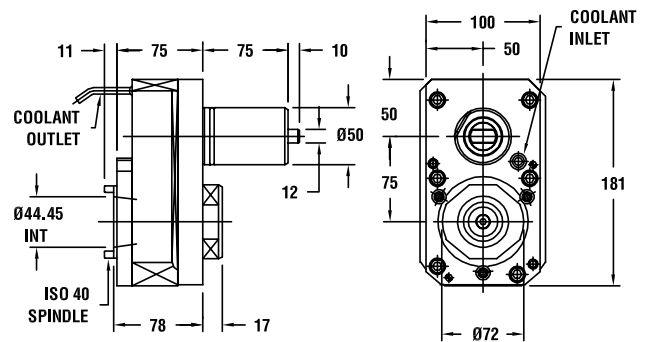
INDEX NUMBER: 20
53478002200



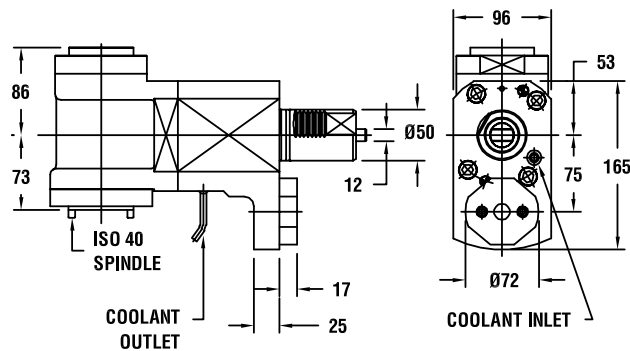
INDEX NUMBER: 21
53478000801



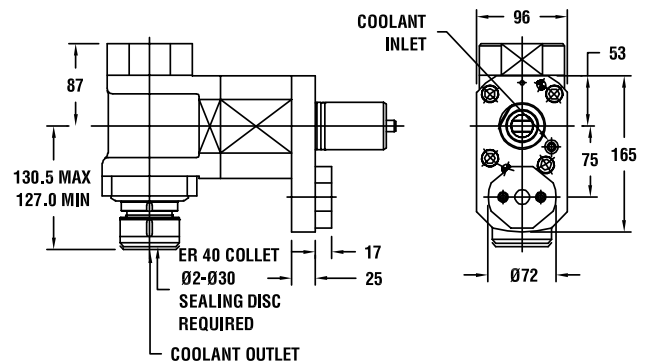
INDEX NUMBER: 22
198.13569.000



INDEX NUMBER: 23
198.13568.000

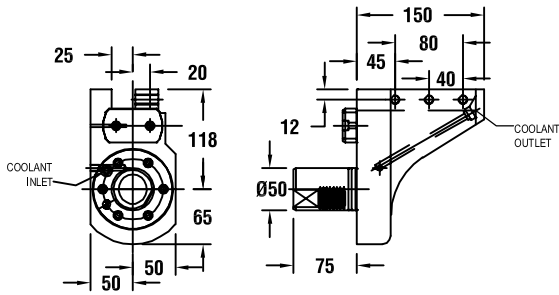


INDEX NUMBER: 24
198.14021.000

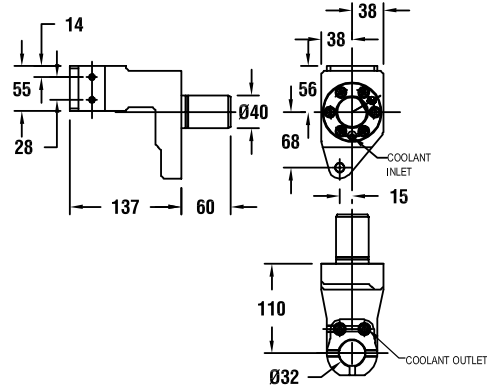




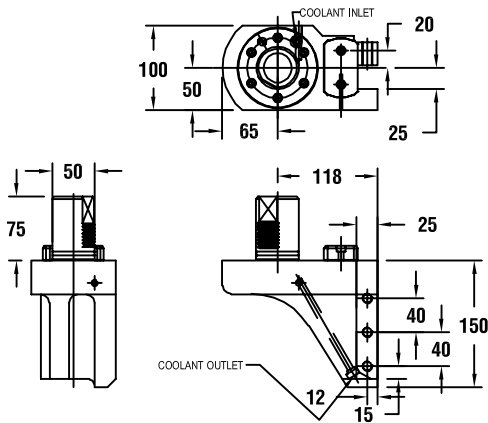
INDEX NUMBER: 25
53478001101



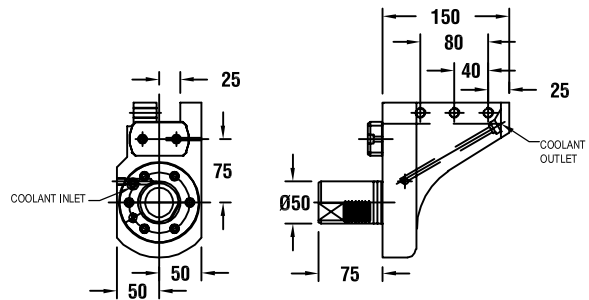
INDEX NUMBER: 26
53478006101



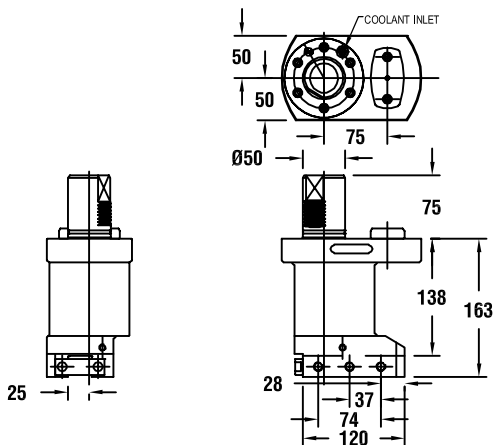
INDEX NUMBER: 27
53478001001



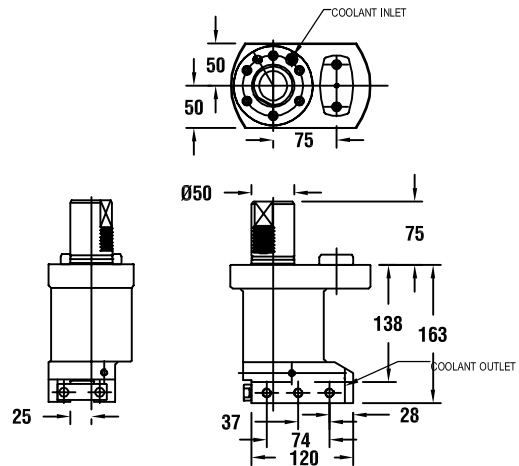
INDEX NUMBER: 28
53478006001



INDEX NUMBER: 29
53478001401



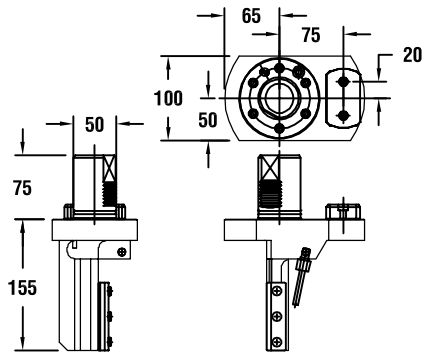
INDEX NUMBER: 30
53478006401



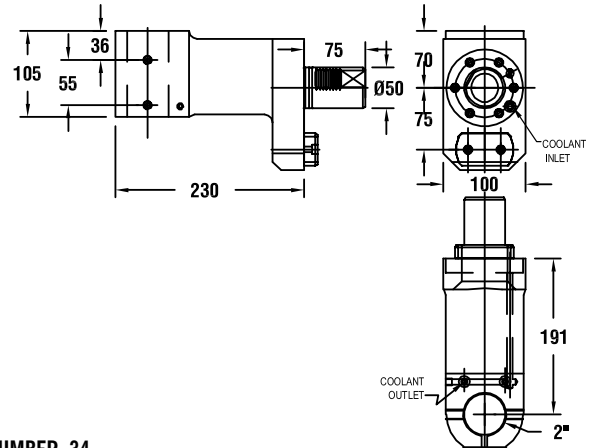
DRIVEN & STATIC



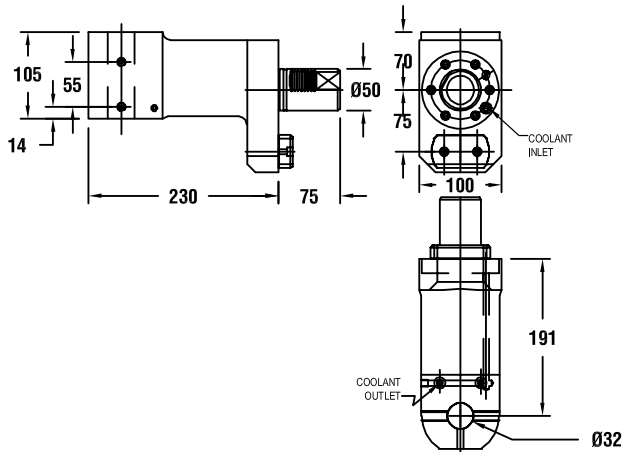
INDEX NUMBER: 31
53478001601



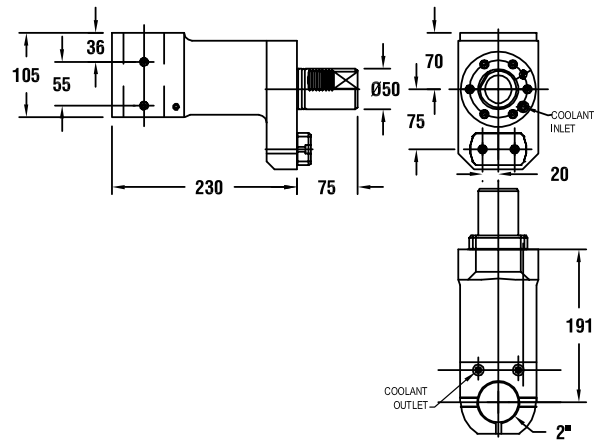
INDEX NUMBER: 32
53478001201



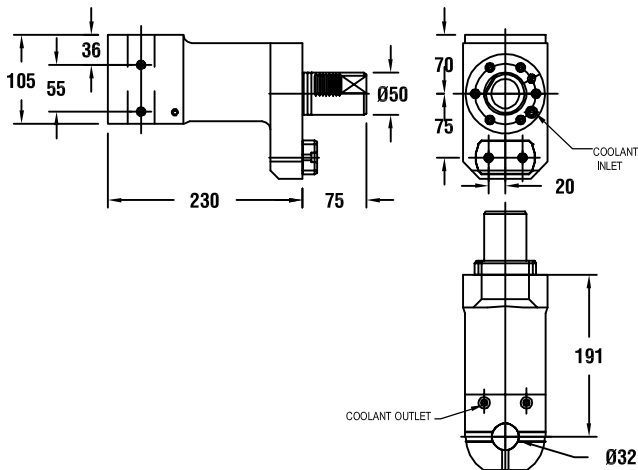
INDEX NUMBER: 33
53478001301



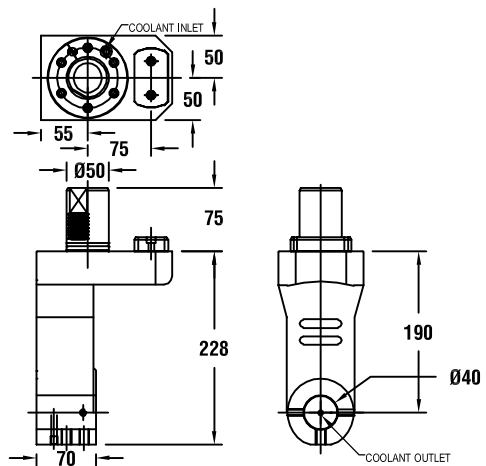
INDEX NUMBER: 34
53478006201



INDEX NUMBER: 35
53478006301

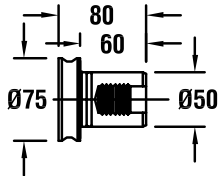


INDEX NUMBER: 36
53478001801

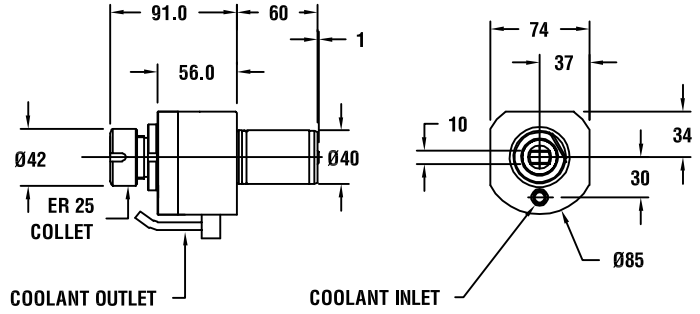




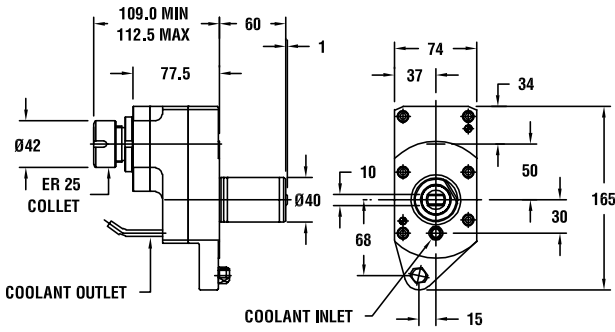
INDEX NUMBER: 37
53488001700



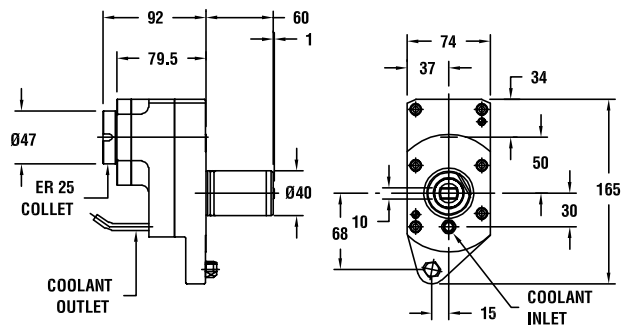
INDEX NUMBER: 38
197.13668.000



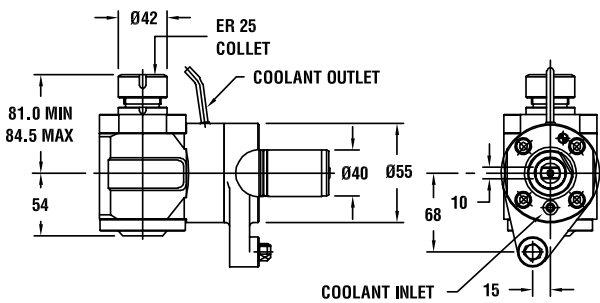
INDEX NUMBER: 39
191.15683.000



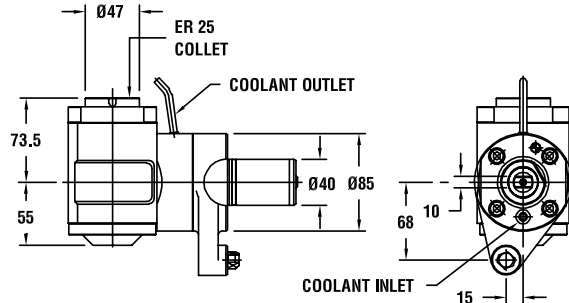
INDEX NUMBER: 40
191.15684.000



INDEX NUMBER: 41
191.15666.000



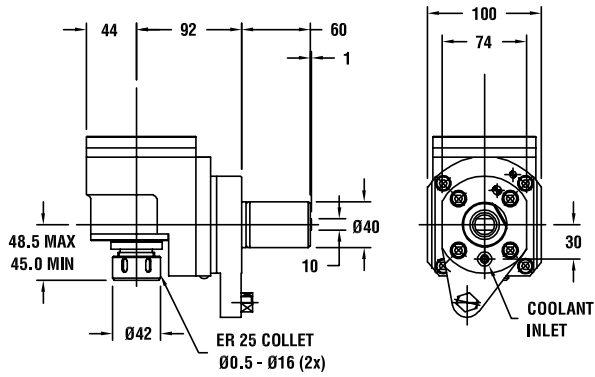
INDEX NUMBER: 42
191.15667.000



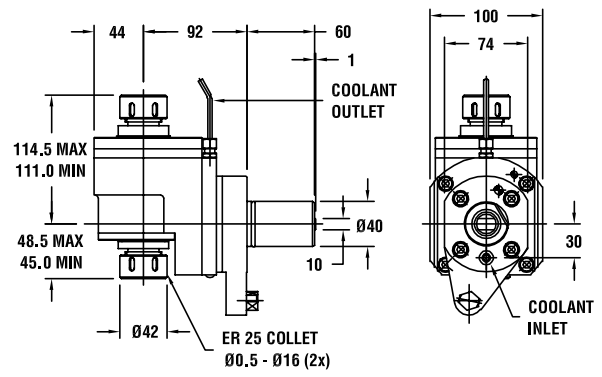
DRIVEN & STATIC



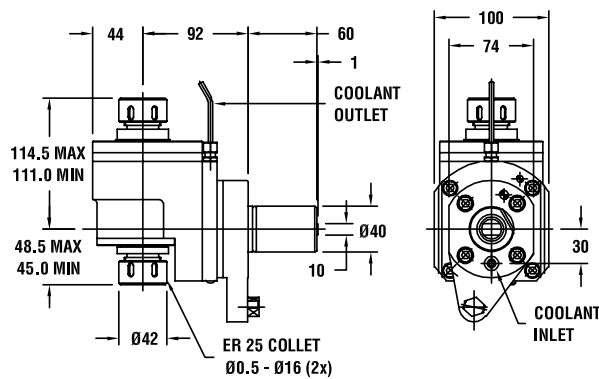
INDEX NUMBER: 43
197.14087.000



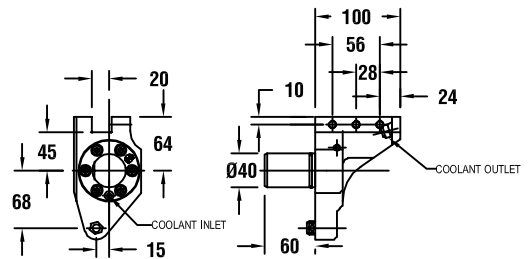
INDEX NUMBER: 44
197.14208.000



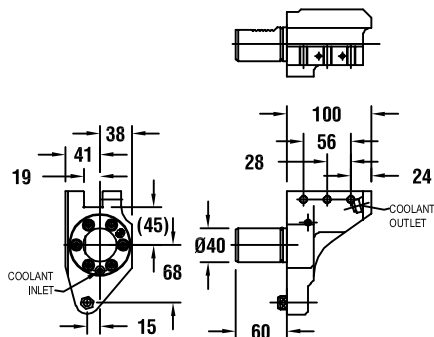
INDEX NUMBER: 45
191.14803.000



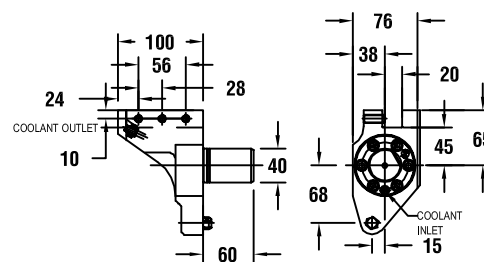
INDEX NUMBER: 46
53518000101



INDEX NUMBER: 47
53518010100

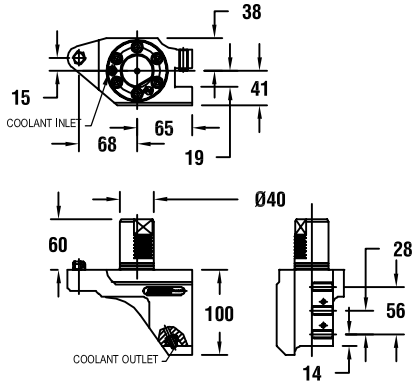


INDEX NUMBER: 48
53519000701

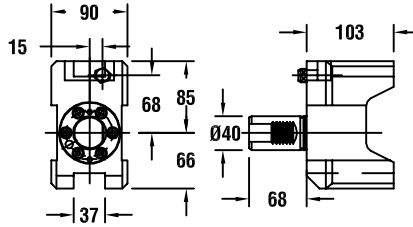




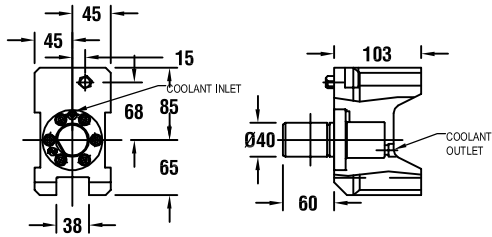
INDEX NUMBER: 49
53518010700



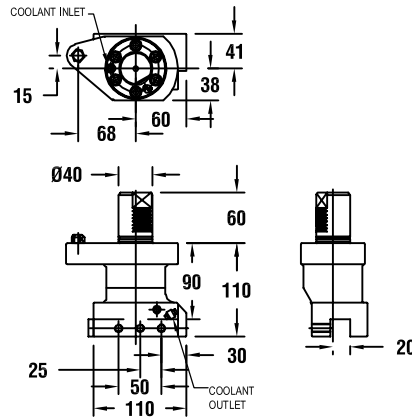
INDEX NUMBER: 50
53538000101



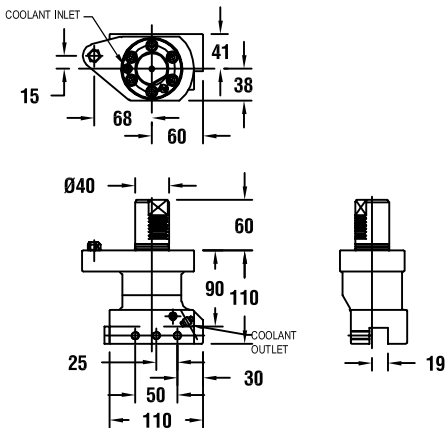
INDEX NUMBER: 51
53518010100



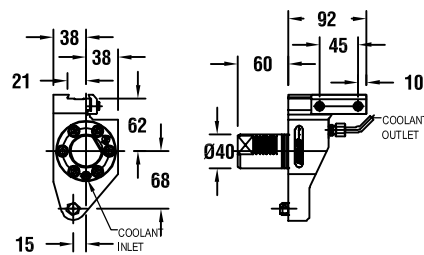
INDEX NUMBER: 52
53518000301



INDEX NUMBER: 53
53518010300



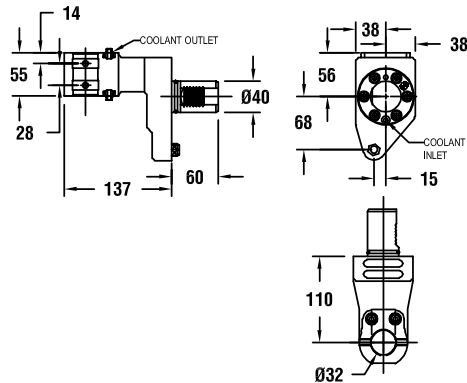
INDEX NUMBER: 54
53518000401



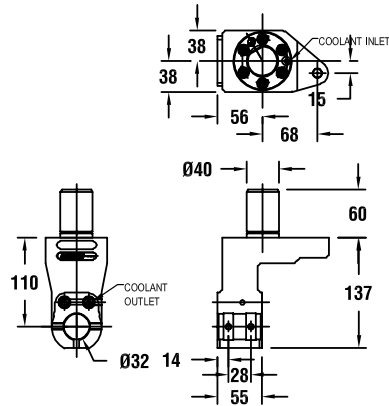
DRIVEN & STATIC



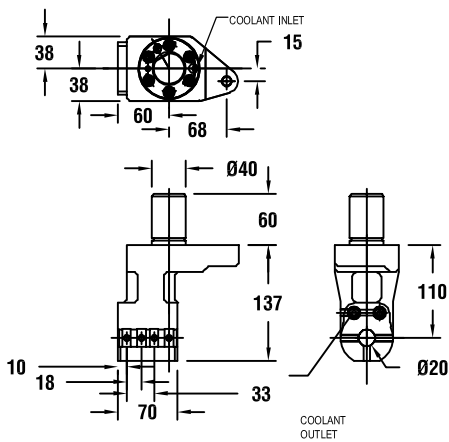
INDEX NUMBER: 55
53518000201



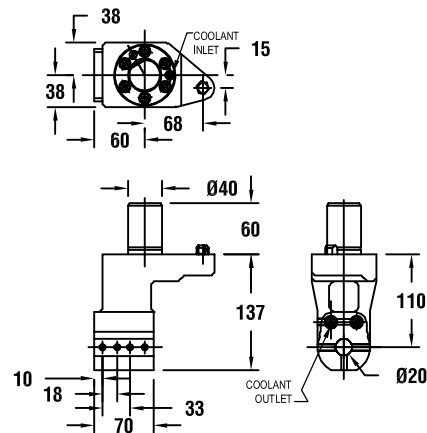
INDEX NUMBER: 56
53518010200



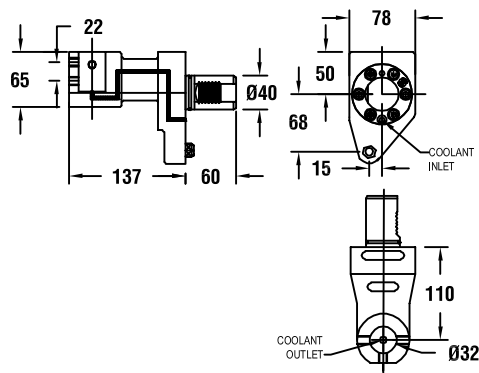
INDEX NUMBER: 57
53518000201



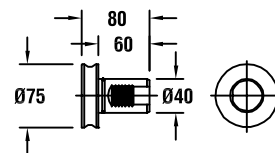
INDEX NUMBER: 58
53518010200



INDEX NUMBER: 59
53518000501

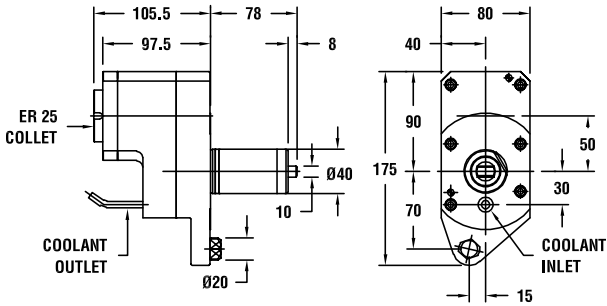


INDEX NUMBER: 60
53518000600

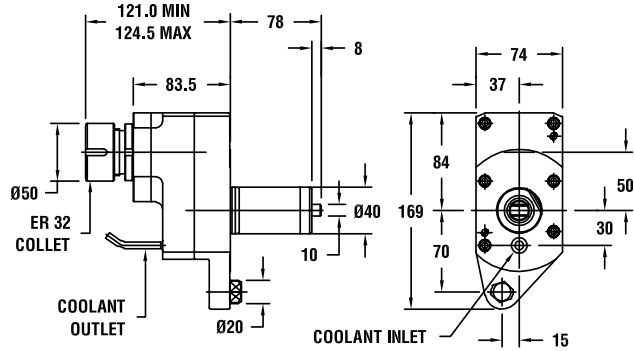




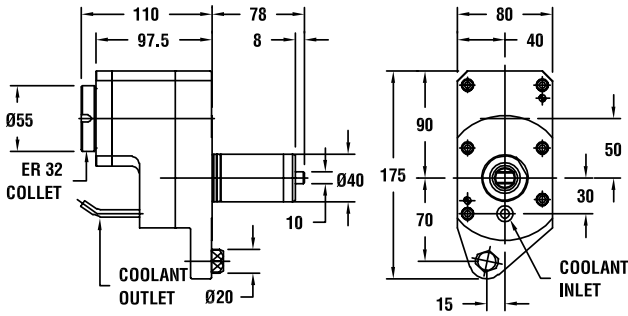
INDEX NUMBER: 61
190.15675.000



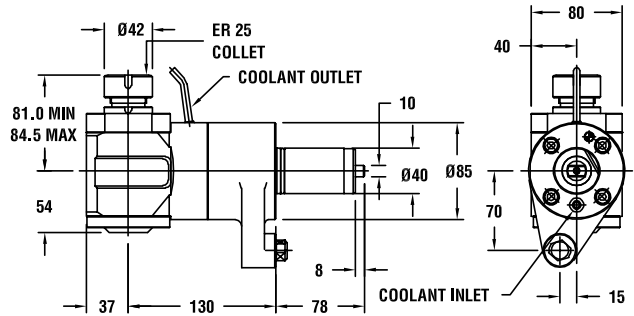
INDEX NUMBER: 62
190.15685.000



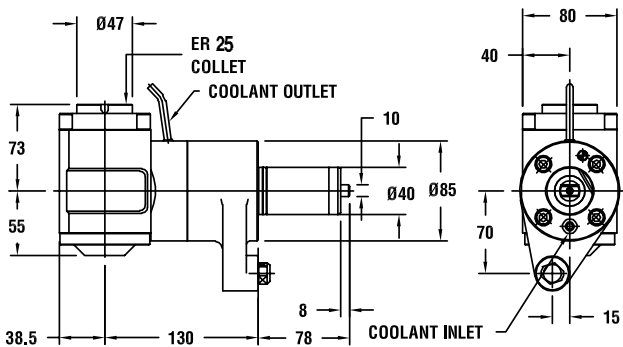
INDEX NUMBER: 63
190.15674.000



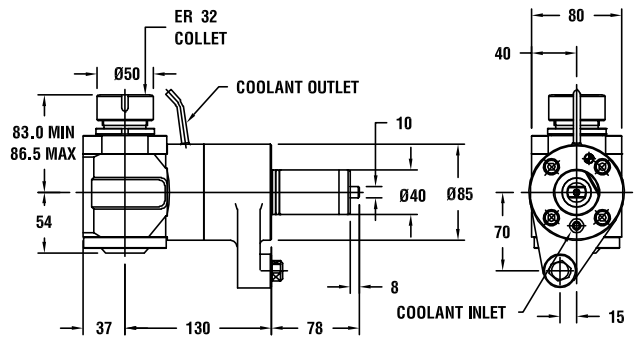
INDEX NUMBER: 64
190.15665.000



INDEX NUMBER: 65
190.15670.000



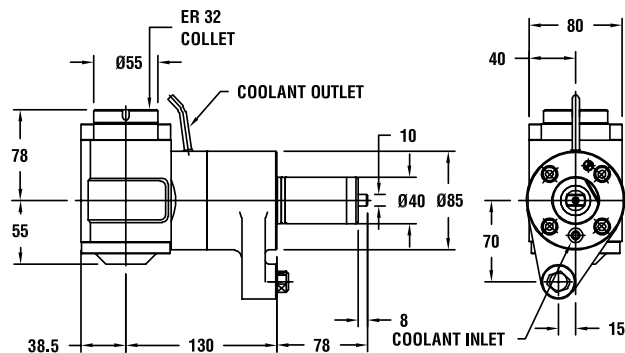
INDEX NUMBER: 66
190.15671.000



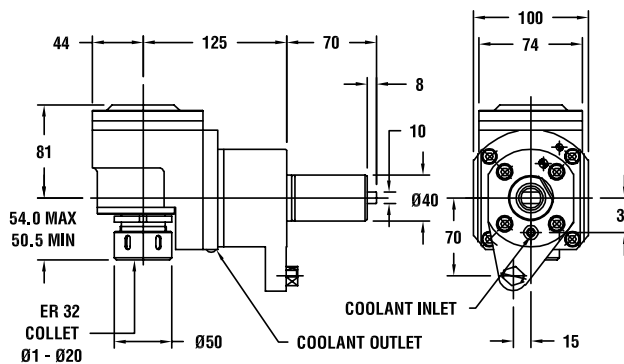
DRIVEN & STATIC



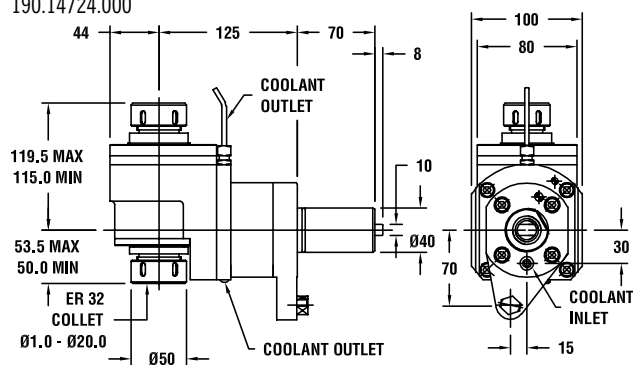
INDEX NUMBER: 67
190.15669.000



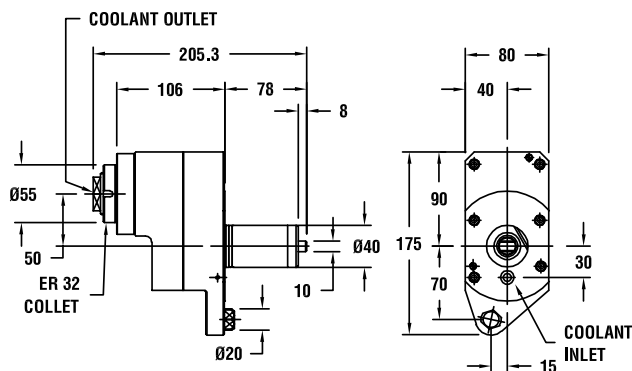
INDEX NUMBER: 68
190.14718.000



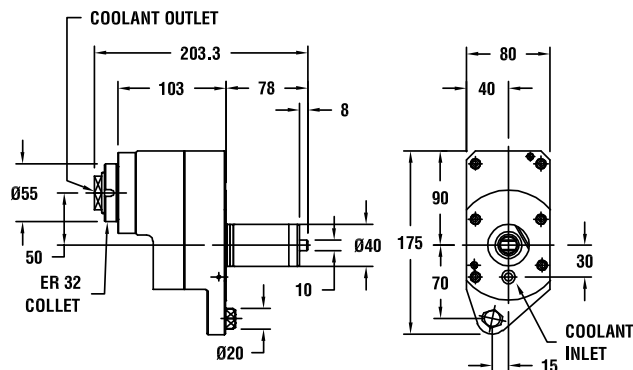
INDEX NUMBER: 69
190.14823.000
190.14724.000



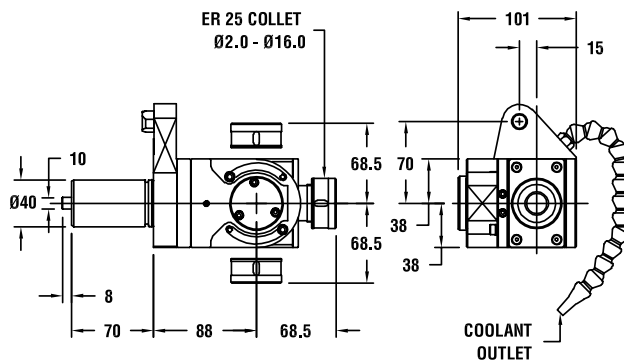
INDEX NUMBER: 70
196.13989.000



INDEX NUMBER: 71
190.10020.000



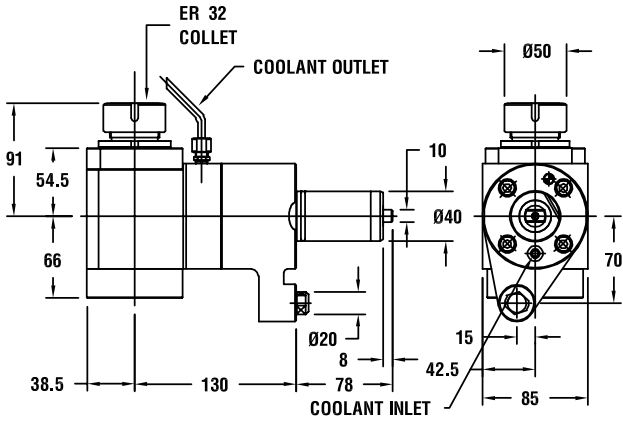
INDEX NUMBER: 72
190.90010.000



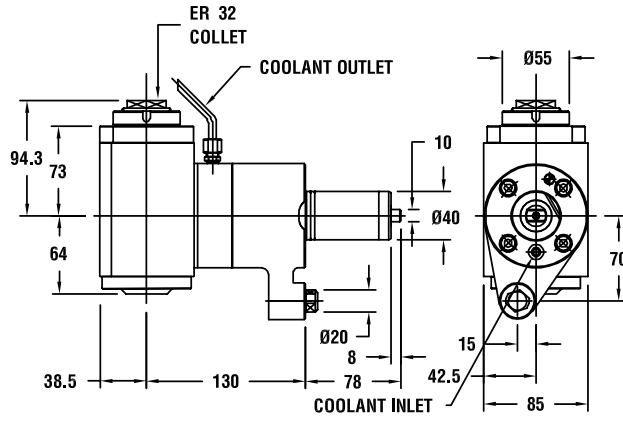
DRIVEN & STATIC



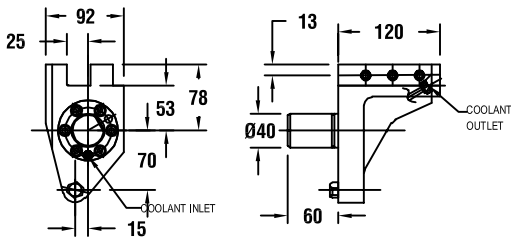
INDEX NUMBER: 73
190.20010.000



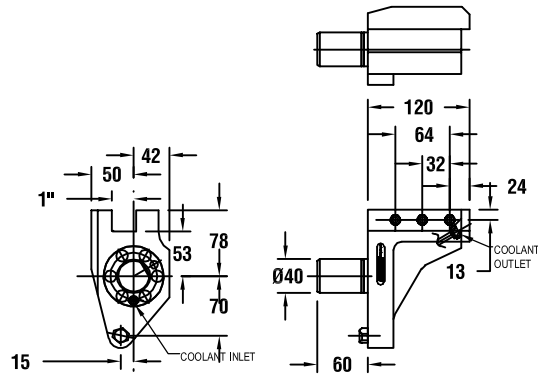
INDEX NUMBER: 74
190.90020.000



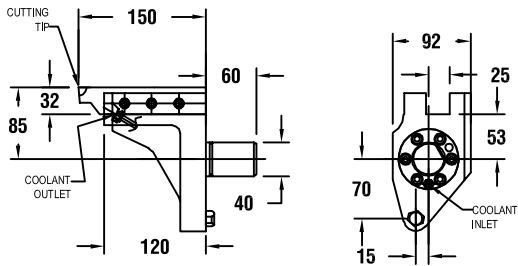
INDEX NUMBER: 75
53618000100



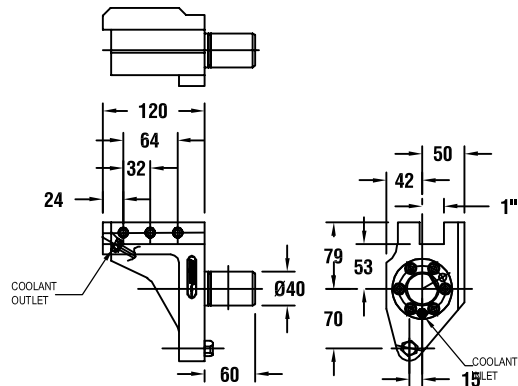
INDEX NUMBER: 76
53618010100



INDEX NUMBER: 77
53618000600



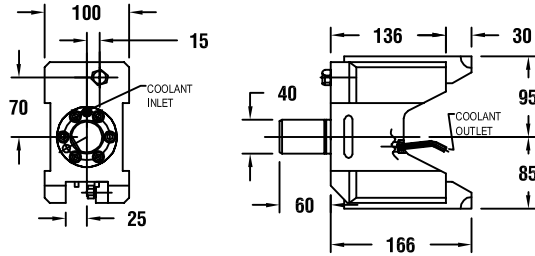
INDEX NUMBER: 78
53618010600



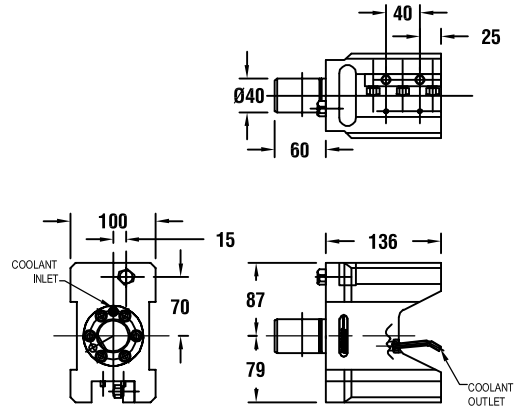
DRIVEN & STATIC



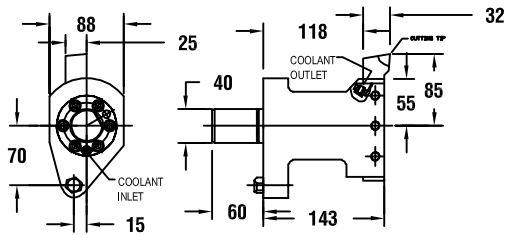
INDEX NUMBER: 79
53638000300



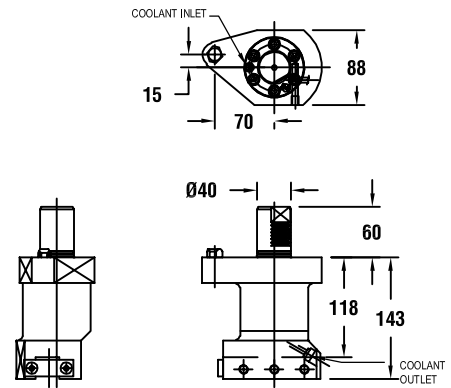
INDEX NUMBER: 80
53638010300



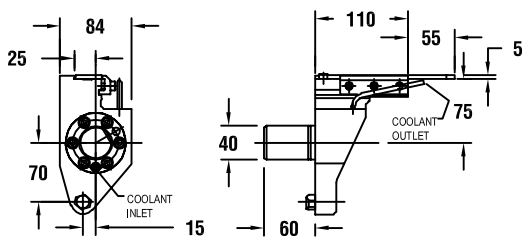
INDEX NUMBER: 81
53618000300



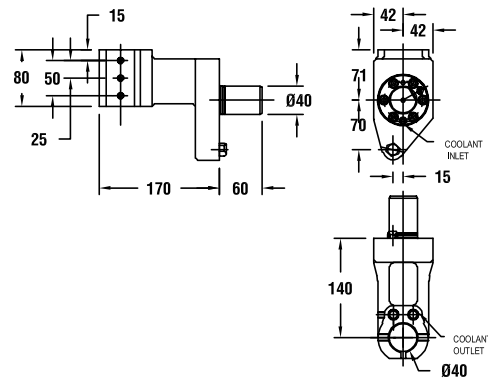
INDEX NUMBER: 82
53618010300



INDEX NUMBER: 83
53618000400

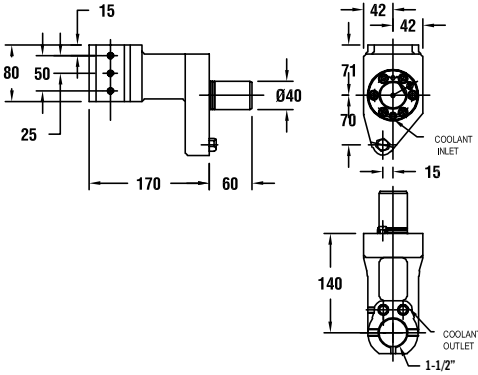


INDEX NUMBER: 84
53208005100

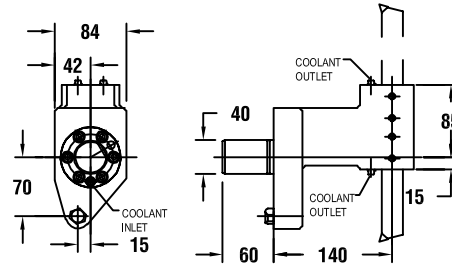




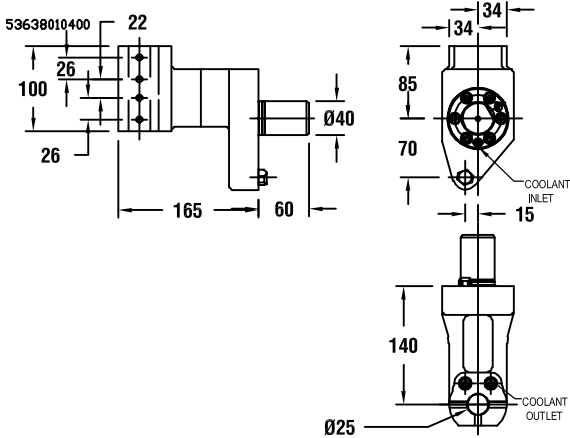
INDEX NUMBER: 85
53208015100



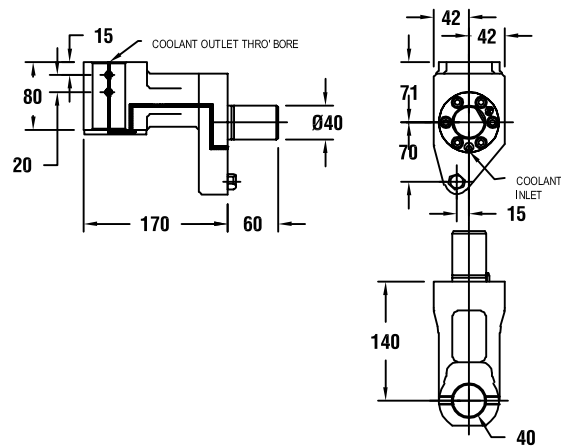
INDEX NUMBER: 86
53638000400



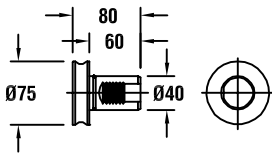
INDEX NUMBER: 87
53638010400



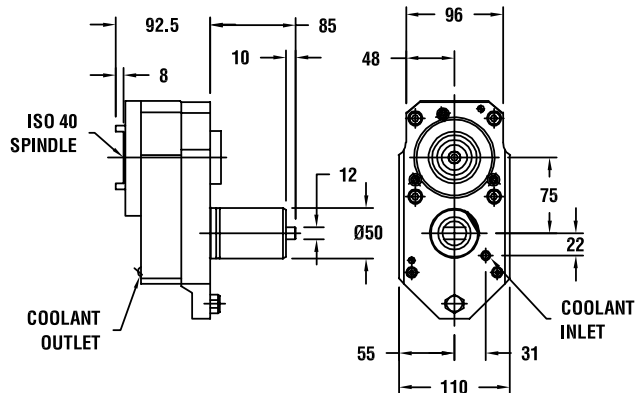
INDEX NUMBER: 88
53208005200



INDEX NUMBER: 89
53518000600



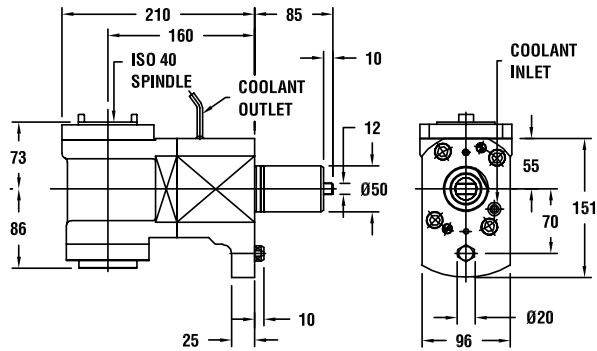
INDEX NUMBER: 90
222.15653.000, 222.1565.000



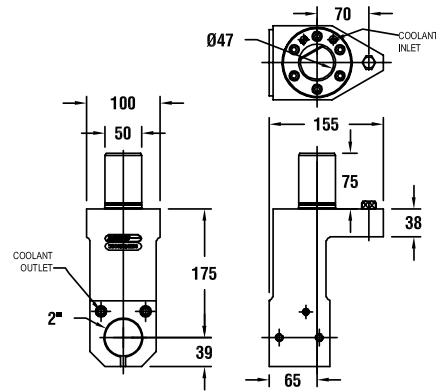
DRIVEN & STATIC



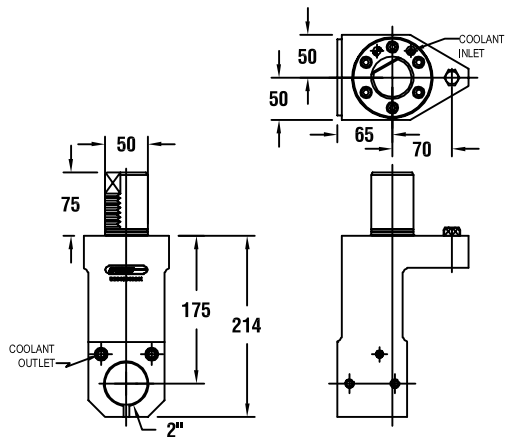
INDEX NUMBER: 91
222.15654.000, 222.15658.000



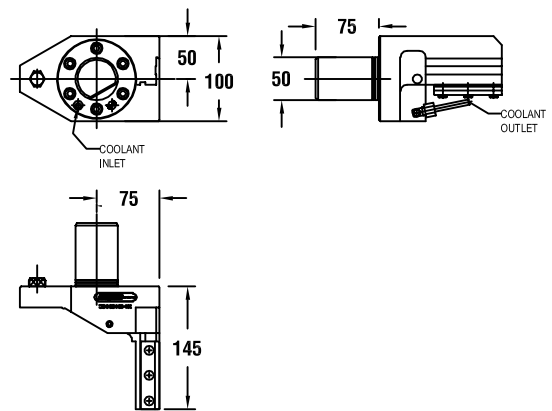
INDEX NUMBER: 92
53308010200



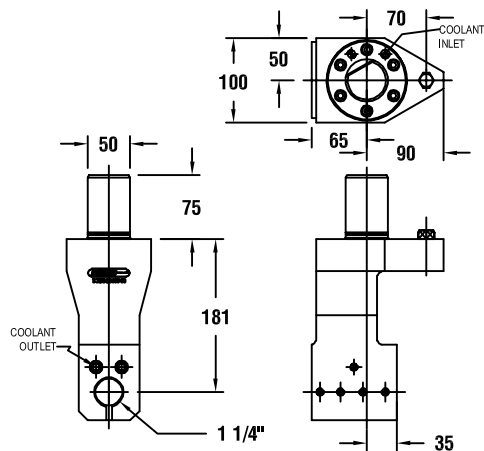
INDEX NUMBER: 93
53308000201



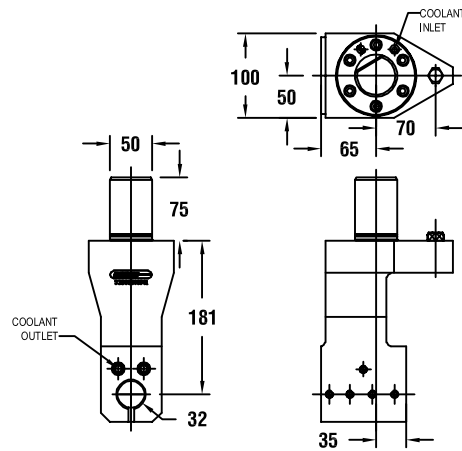
INDEX NUMBER: 94
53308000401



INDEX NUMBER: 95
53838010900

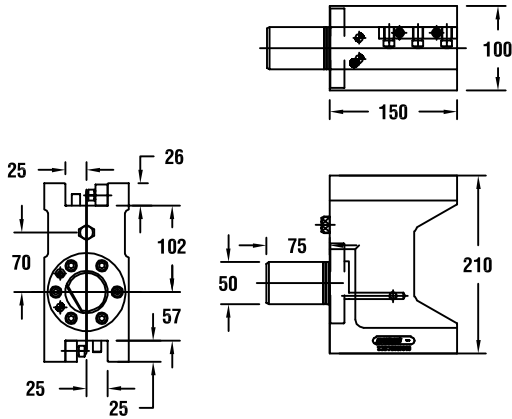


INDEX NUMBER: 96
53838000901

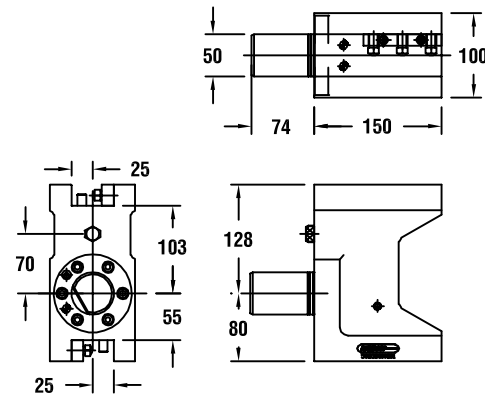




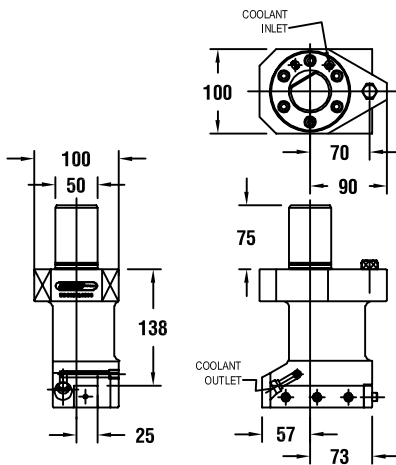
INDEX NUMBER: 97
5338010800



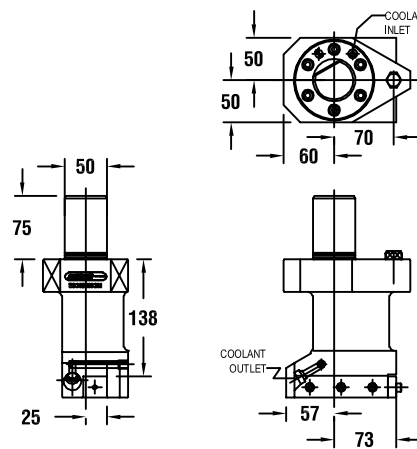
INDEX NUMBER: 98
5338000801



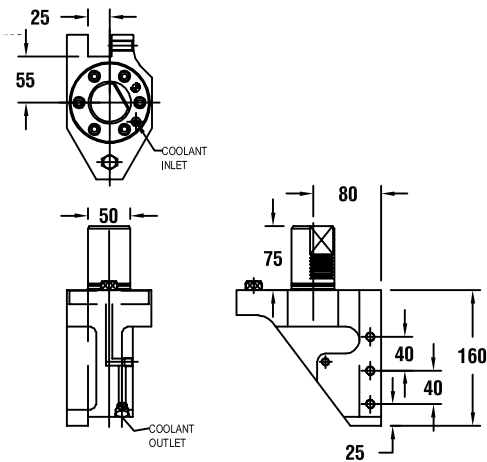
INDEX NUMBER: 99
53308010300



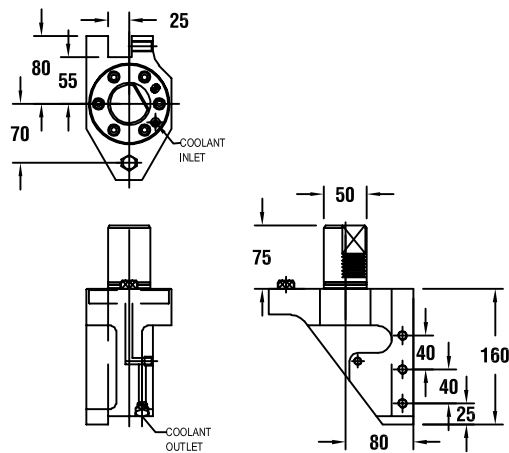
INDEX NUMBER: 100
53308000301



INDEX NUMBER: 101
53308010100



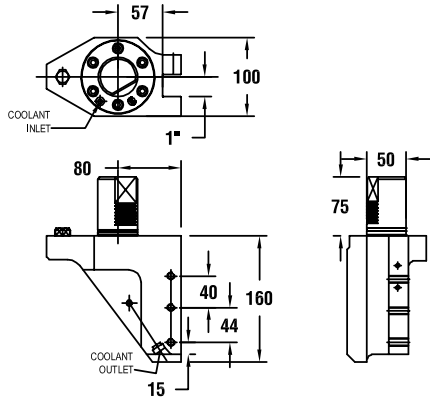
INDEX NUMBER: 102
53308000101



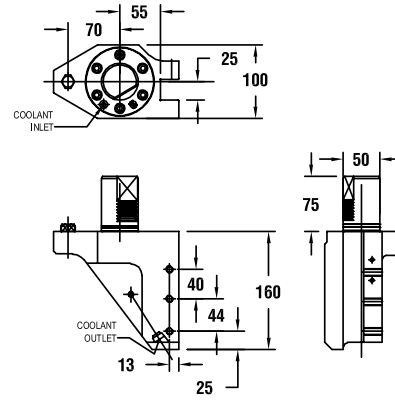
DRIVEN & STATIC



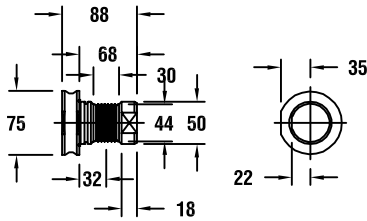
INDEX NUMBER: 103
53308010600



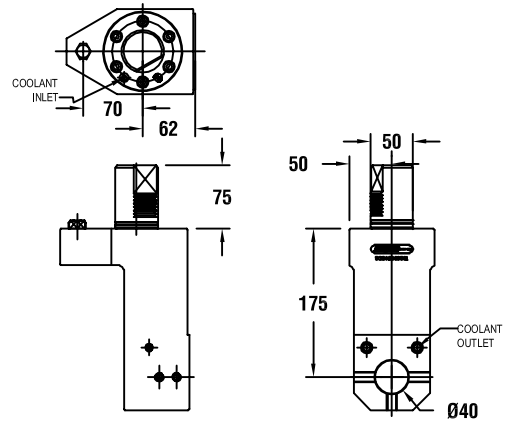
INDEX NUMBER: 104
53308000601



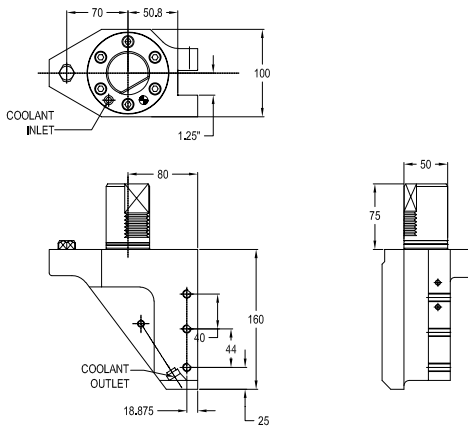
INDEX NUMBER: 105
53818000701



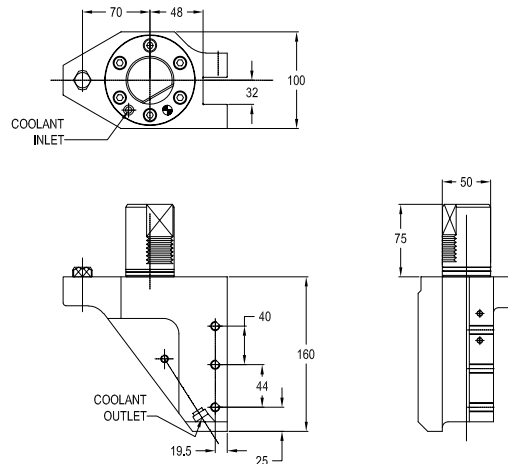
INDEX NUMBER: 106
53308000501



INDEX NUMBER: 107
53688010100

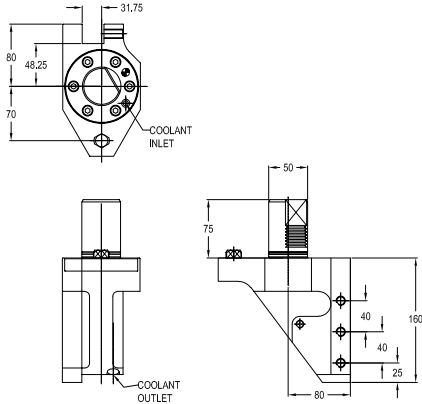


INDEX NUMBER: 108
53688000100

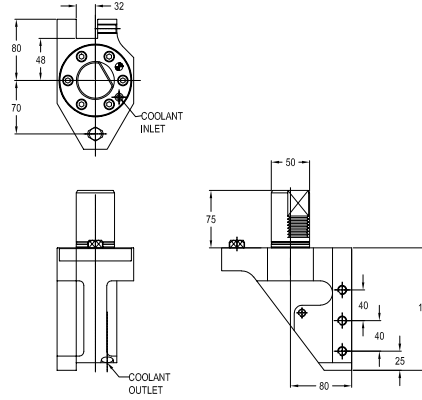




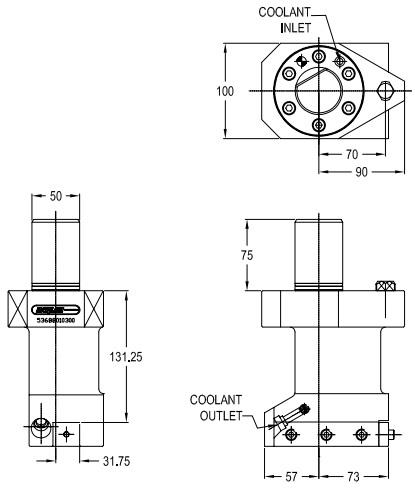
INDEX NUMBER: 109
53688010200



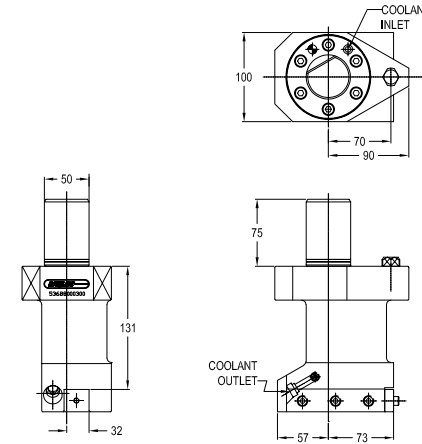
INDEX NUMBER: 110
53688000200



INDEX NUMBER: 111
53688010300



INDEX NUMBER: 112
53688000300



DRIVEN & STATIC



MORI-HITECH CS20, CS200, CS25, CS250

DRIVEN TOOLS

Part Number	Description	Output Spindle	Ratio	Coolant Type	Drawing Index #
298.15208.000	STR SWITCH CLNT D/TL ADJ ER32 3000R	ER32	1:1	External	1
298.15207.000	90DEG SWITCH CLNT D/TL ADJ ER32 3000R	ER32	1:1	External	2

MT 2000, 2500, ZT 2500

DRIVEN TOOLS

Part Number	Description	OEM Ref #	Output Spindle	Speed Max	Coolant Type	Drawing Index #
365.15877.000	STRAIGHT 40 VDI-ER40 EXT COOL 4000RPM	T32373	ER40	4000	External	3
365.15878.000	90-DEG 40 VDI-ER40 EXT COOL 4000RPM	T32374	ER40	4000	External	4
365.15879.000	DBL END 40 VDI-ER40 EXT COOL 4000RPM	T32375	ER40	4000	External	5
365.15976.000	STRAIGHT 40 VDI-ER40 INT COOL 6000RPM	-	ER40	6000	Internal	3
365.15977.000	STRAIGHT 40 VDI-ER40 EXT COOL 6000RPM	T32376	ER40	6000	External	3
365.15978.000	90-DEG 40 VDI-ER40 EXT COOL 6000RPM	T32377	ER40	6000	External & Internal	4
365.15984.000	DBL END 40 VDI-ER40 EXT COOL 6000RPM	T32378	ER40	6000	External	5

NL1500, 2000, 2500, 3000
NT4200, 4250, 4300

DRIVEN TOOLS

Part Number	Description	OEM Part Number	Output Spindle	Speed Max	Coolant Type	Drawing Index #
T32206	STRAIGHT TOOL EXTERNAL COOLANT 6000RPM	T32206	ER32	6000	External	6
T32206-TC	STRAIGHT TOOL THROUGH COOLANT 6000RPM	-	ER32	6000	Internal	6
T32207	90 DEGREE TOOL EXTERNAL COOLANT 6000 RPM	T32207	ER32	6000	External	7
T32207-TC	90 DEGREE TOOL THROUGH COOLANT 6000 RPM	-	ER32	6000	Internal	7
T32216	DOUBLE ENDER EXTERNAL COOLANT 6000 RPM	T32216	ER32	6000	External	8
T32213	STRAIGHT TOOL EXTERNAL COOLANT 6000 RPM	T32206	ER40	6000	External	9
T32213-TC	STRAIGHT TOOL THROUGH COOLANT 6000RPM	-	ER40	6000	Internal	9
T32214	90 DEGREE TOOL EXTERNAL COOLANT 6000 RPM	T32207	ER40	6000	External	10
T32214-TC	90 DEGREE TOOL THROUGH COOLANT 6000 RPM	-	ER40	6000	Internal	10
T32217-22MM	STR SHELL MILL 22MM EXT COOLANT 6000RPM	-	22MM SHELL MILL	6000	External	11
T32217-27MM	STR SHELL MILL 27MM EXT COOLANT 6000RPM	-	27MM SHELL MILL	6000	External	11
T32217-1.00	STR SHELL MILL 1" EXT COOLANT 6000RPM	-	1" SHELL MILL	6000	External	11
T32217-0.75	STR SHELL MILL 0.75" EXT COOLANT 6000RPM	-	3/4" SHELL MILL	6000	External	11
T32226-22MM	90 DEGREE TOOL EXT SHELL MILL 22MM 6000 RPM	-	22MM SHELL MILL	6000	External	40



NL1500, 2000, 2500, 3000
NT4200, 4250, 4300

STATIC TOOLS (CONTINUED)

Part Number	Description	Drawing Index #
T10097	BORING BAR HOLDER - 40MM	12
T10101	BORING BAR HOLDER - 1-1/2" (NL ONLY)	13
T10098	BORING BAR HOLDER - 50MM (NL ONLY)	14
T10102	BORING BAR HOLDER - 2" (NL ONLY)	15
T10096	DOUBLE BORING BAR HOLDER - 32MM	16
T10100	DOUBLE BORING BAR HOLDER - 1-1/4"	17
T10104	TRIPLE BORING BAR HOLDER - 25MM	18
T10108	TRIPLE BORING BAR HOLDER - 1"	19
T13128	U DRILL HOLDER - 40MM (NL ONLY)	20
T13130	U DRILL HOLDER - 1-1/2" (NL ONLY)	21
T00198	CUT-OFF HOLDER - 1"	22
T00197	CUT-OFF HOLDER - 40MM (NL ONLY)	23
T00187	OD CUTTING HOLDER - FORWARD - 20MM	24
T00203	OD CUTTING HOLDER - FORWARD - 3/4"	25
T00185	OD CUTTING HOLDER - COMBO FORWARD / REVERSE - 20MM	26
T00201	OD CUTTING HOLDER - COMBO FORWARD / REVERSE - 3/4"	27
T17004	CENTER DRILL HOLDER - METRIC - ML1500	28
T17005	CENTER DRILL HOLDER - IMPERIAL - ML1500	29
T03006	FACE & I/D CUTTING HOLDER - 20MM	30
T03014	FACE & I/D CUTTING HOLDER - 3/4"	31
T00186	OD CUTTING HOLDER - FORWARD - 25MM	32
T00202	OD CUTTING HOLDER - FORWARD - 1"	33
T00184	OD CUTTING HOLDER - COMBO FORWARD / REVERSE - 25MM	34
T00199	OD CUTTING HOLDER - COMBO FORWARD / REVERSE - 1"	35
T17002	CENTER DRILL HOLDER - METRIC	36
T17003	CENTER DRILL HOLDER - IMPERIAL	37
T03005	FACE & I/D CUTTING HOLDER - 25MM	38
T03013	FACE & I/D CUTTING HOLDER - 1"	39
T10113	BORING BAR HOLDER - 40MM (NT ONLY)	41
T10134	BORING BAR HOLDER - 1-1/2" (NT ONLY)	42
T10114	BORING BAR HOLDER - 50MM (NT ONLY)	43
T10135	BORING BAR HOLDER - 2" (NT ONLY)	44
T13131	U DRILL HOLDER - 40MM (NT ONLY)	45
T13137	U DRILL HOLDER - 1-1/2" (NT ONLY)	46

NL 1500, 2000, 2500, 3000 SERIES
NT4200, 4250, 4300

SOCKETS

Part Number	Description
T20098	BORING BAR SLEEVE 40MM - 32MM
T20096	BORING BAR SLEEVE 40MM - 25MM
T20094	BORING BAR SLEEVE 40MM - 20MM
T20092	BORING BAR SLEEVE 40MM - 16MM
T20090	BORING BAR SLEEVE 40MM - 12MM
T20088	BORING BAR SLEEVE 40MM - 10MM



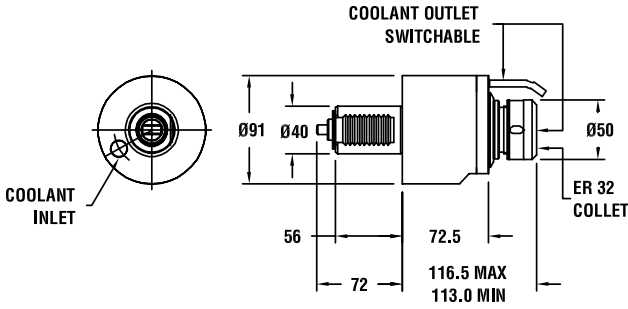
NL1500, 2000, 2500, 3000 SERIES NT4200, 4250, 4300

SOCKETS (CONTINUED)

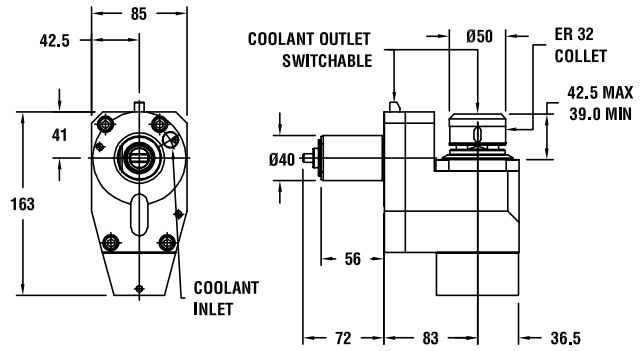
Part Number	Description
T20086	BORING BAR SLEEVE 40MM - 8MM
T20099	BORING BAR SLEEVE 1-1/2" - 1-1/4"
T20097	BORING BAR SLEEVE 1-1/2" - 1"
T20095	BORING BAR SLEEVE 1-1/2" - 3/4"
T20093	BORING BAR SLEEVE 1-1/2" - 5/8"
T20091	BORING BAR SLEEVE 1-1/2" - 1/2"
T20089	BORING BAR SLEEVE 1-1/2" - 3/8"
T20196	BORING BAR SLEEVE 32MM - 20MM
T20194	BORING BAR SLEEVE 32MM - 16MM
T20110	BORING BAR SLEEVE 32MM - 12MM
T20108	BORING BAR SLEEVE 32MM - 10MM
T20106	BORING BAR SLEEVE 32MM - 8MM
T20197	BORING BAR SLEEVE 1-1/2" - 3/4" (COOLANT THRU)
T20195	BORING BAR SLEEVE 1-1/2" - 5/8" (COOLANT THRU)
T20111	BORING BAR SLEEVE 1-1/2" - 1-1/4" (COOLANT THRU)
T20109	BORING BAR SLEEVE 1-1/2" - 3/8" (COOLANT THRU)
T20122	BORING BAR SLEEVE 32MM - 25MM
T20120	BORING BAR SLEEVE 32MM - 20MM
T20118	BORING BAR SLEEVE 32MM - 16MM
T20116	BORING BAR SLEEVE 32MM - 12MM
T20114	BORING BAR SLEEVE 32MM - 10MM
T20112	BORING BAR SLEEVE 32MM - 8MM
T20123	BORING BAR SLEEVE 1-1/4" - 1"
T20121	BORING BAR SLEEVE 1-1/4" - 3/4"
T20119	BORING BAR SLEEVE 1-1/4" - 5/8"
T20117	BORING BAR SLEEVE 1-1/4" - 1/2"
T20115	BORING BAR SLEEVE 1-1/4" - 3/8"
T22042	DRILL SOCKET 40MM - MT3
T22044	DRILL SOCKET 40MM - MT4
T22046	DRILL SOCKET 40MM - MT2
T22066	DRILL SOCKET 40MM - MT1
T22043	DRILL SOCKET 1-1/2" - MT3
T22045	DRILL SOCKET 1-1/2" - MT4
T22047	DRILL SOCKET 1-1/2" - MT2
T22067	DRILL SOCKET 1-1/2" - MT1
T22048	DRILL SOCKET 32MM - MT2
T22050	DRILL SOCKET 32MM - MT1
T22049	DRILL SOCKET 1-1/4" - MT2
T22051	DRILL SOCKET 1-1/4" - MT1
T20100	THROW-AWAY DRILL SOCKET 40MM - 32MM
T20102	THROW-AWAY DRILL SOCKET 40MM - 25MM
T20104	THROW-AWAY DRILL SOCKET 40MM - 20MM
T20190	THROW-AWAY DRILL SOCKET 40MM - 16MM
T20101	THROW-AWAY DRILL SOCKET 1-1/2" - 1-1/4"
T20103	THROW-AWAY DRILL SOCKET 1-1/2" - 1"
T20105	THROW-AWAY DRILL SOCKET 1-1/2" - 3/4"



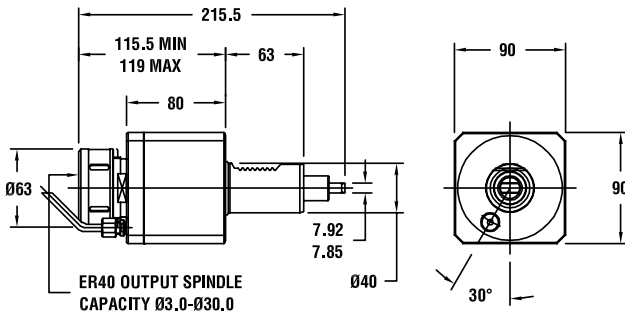
INDEX NUMBER: 1
298.15208.000



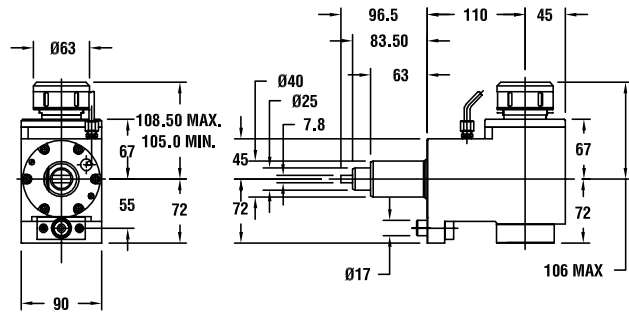
INDEX NUMBER: 2
298.15207.000



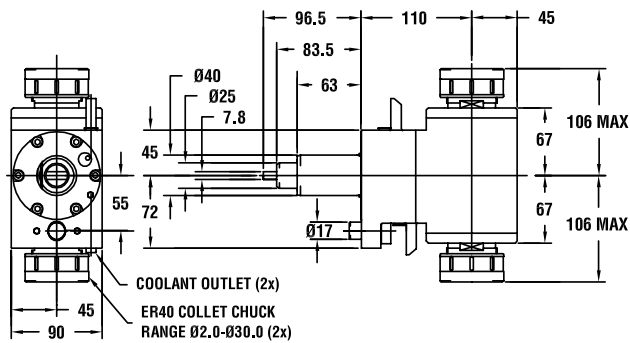
INDEX NUMBER: 3
365.15877.000
365.15976.000



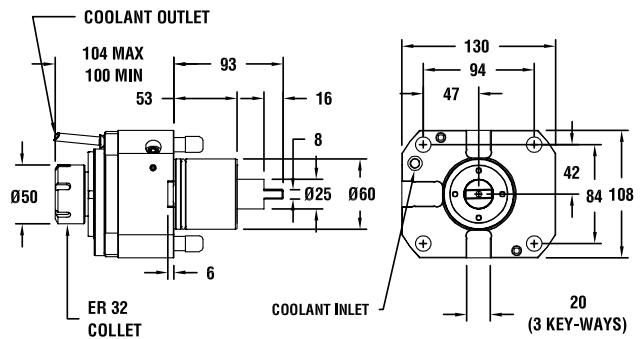
INDEX NUMBER: 4
365.15878.000



INDEX NUMBER: 5
365.15879.000



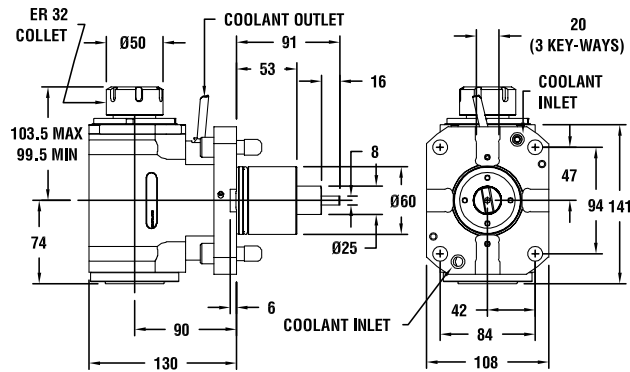
INDEX NUMBER: 6
T32206



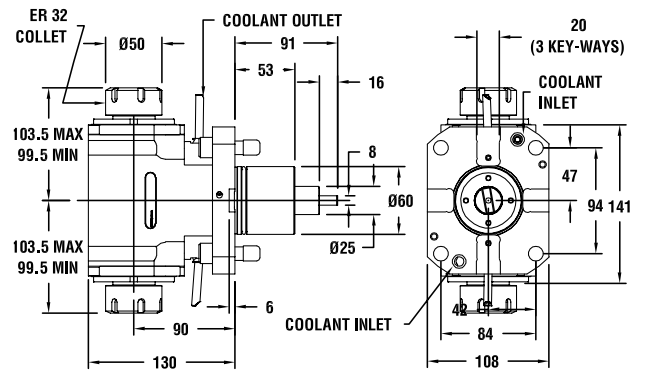
DRIVEN & STATIC



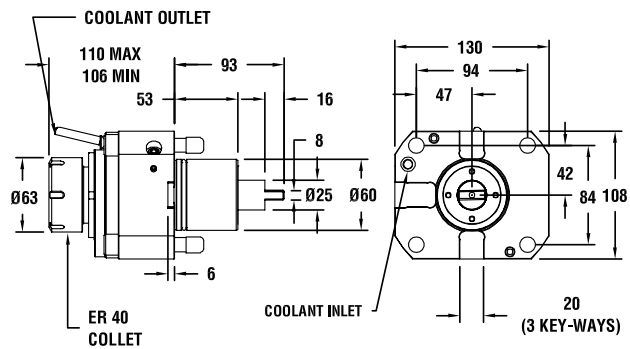
INDEX NUMBER: 7
T32207



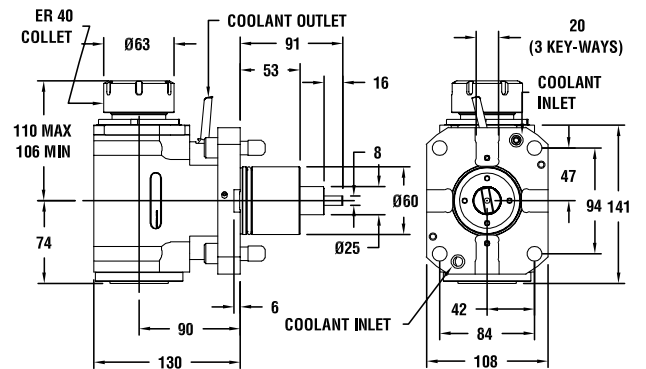
INDEX NUMBER: 8
T32216



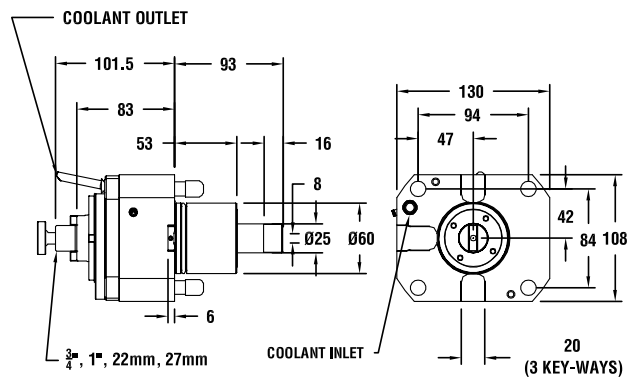
INDEX NUMBER: 9
T32213



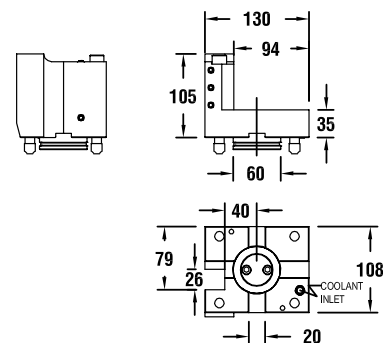
INDEX NUMBER: 10
T32214



INDEX NUMBER: 11
TC32217

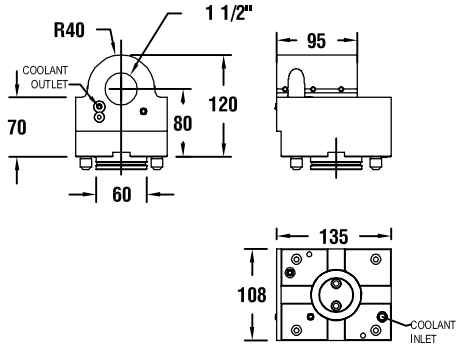


INDEX NUMBER: 12
T00197

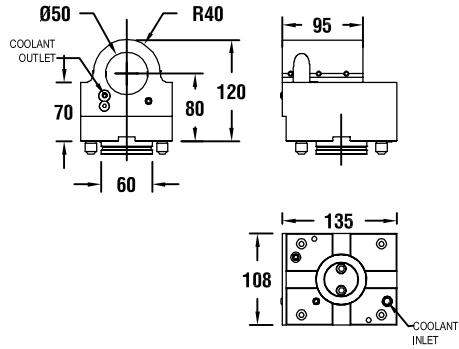




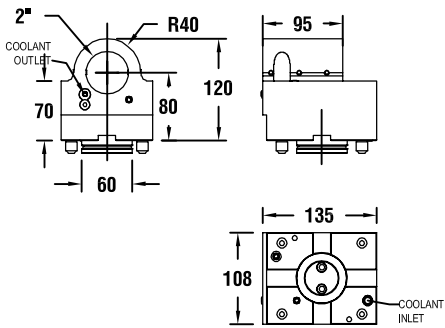
INDEX NUMBER: 13
T10101



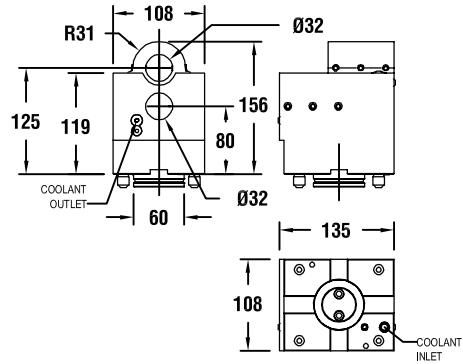
INDEX NUMBER: 14
T10098



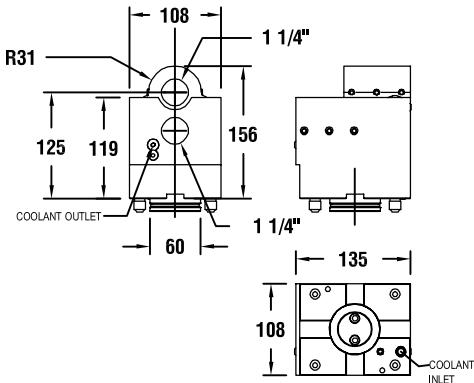
INDEX NUMBER: 15
T10102



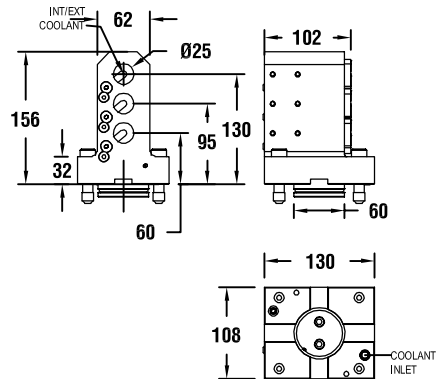
INDEX NUMBER: 16
T10096



INDEX NUMBER: 17
T10100



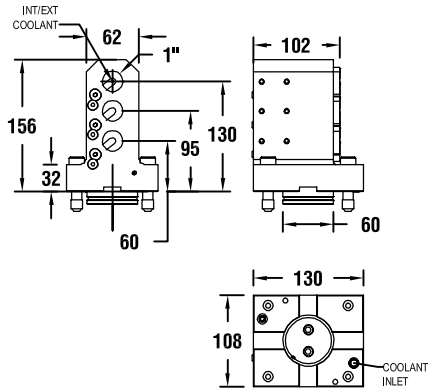
INDEX NUMBER: 18
T10104



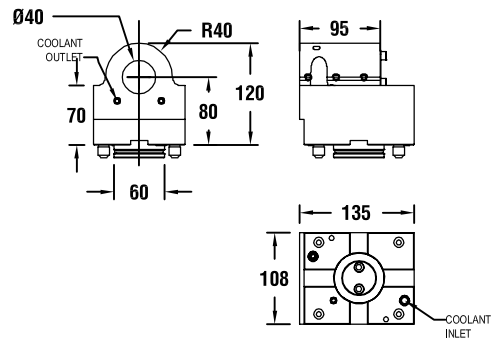
DRIVEN & STATIC



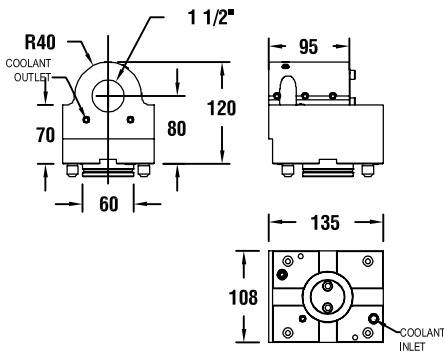
INDEX NUMBER: 19
T10108



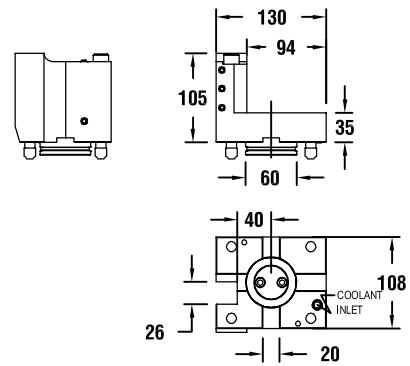
INDEX NUMBER: 20
T13128



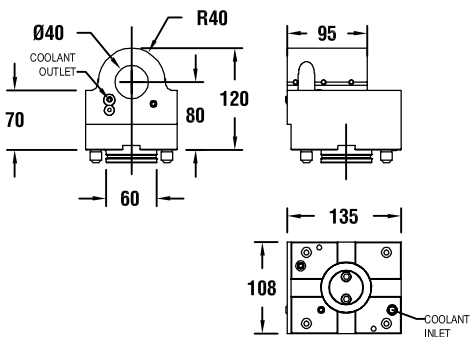
INDEX NUMBER: 21
T13130



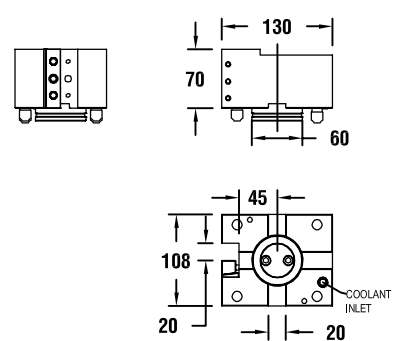
INDEX NUMBER: 22
T00198



INDEX NUMBER: 23
T10097

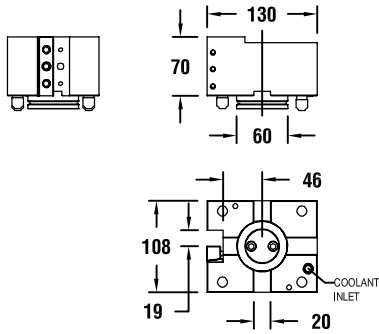


INDEX NUMBER: 24
T00187

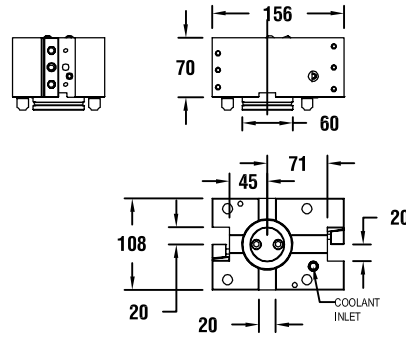




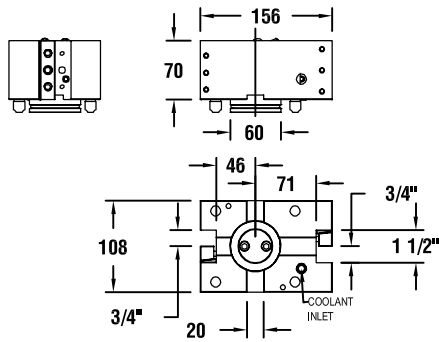
INDEX NUMBER: 25
T00203



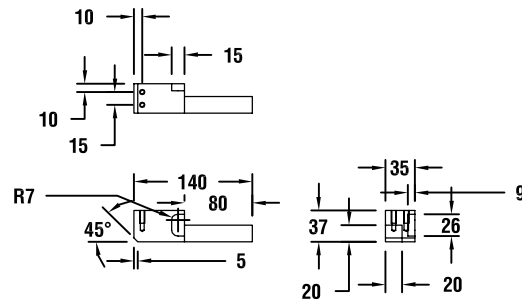
INDEX NUMBER: 26
T00185



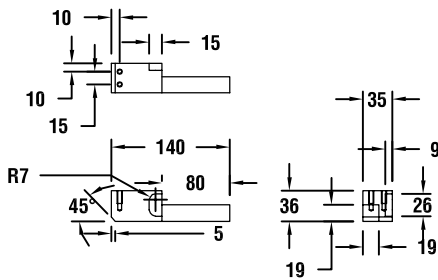
INDEX NUMBER: 27
T00201



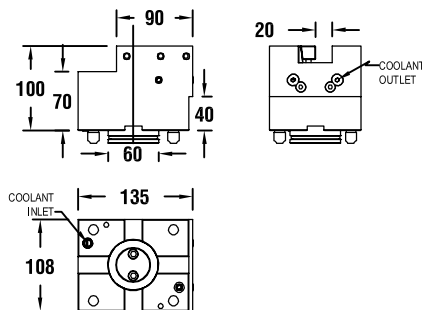
INDEX NUMBER: 28
T17004



INDEX NUMBER: 29
T17005

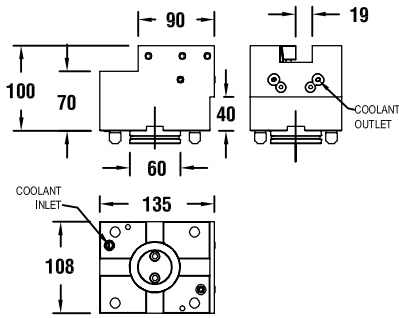


INDEX NUMBER: 30
T03006

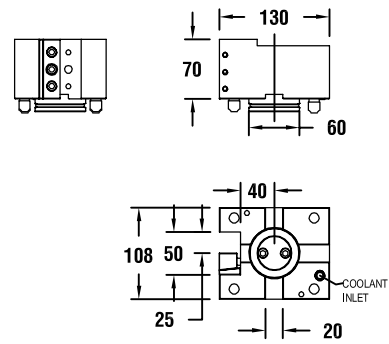




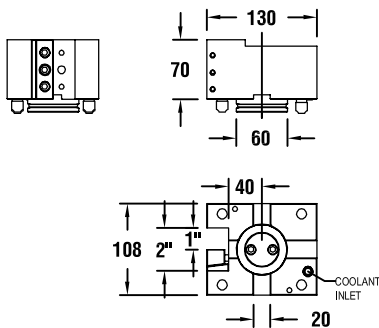
INDEX NUMBER: 31
T03014



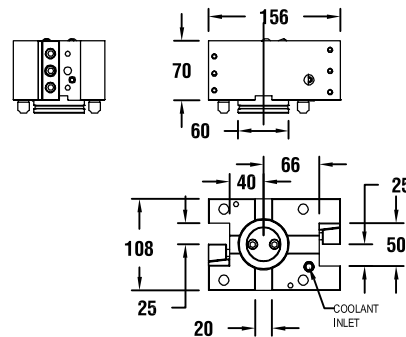
INDEX NUMBER: 32
T00186



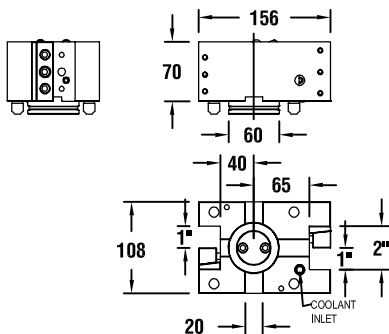
INDEX NUMBER: 33
T00202



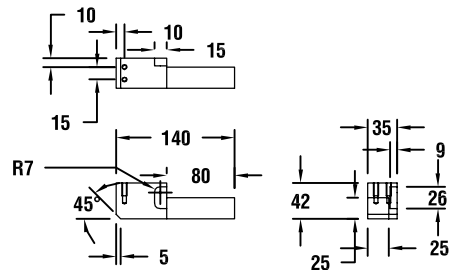
INDEX NUMBER: 34
T00184



INDEX NUMBER: 35
T00199

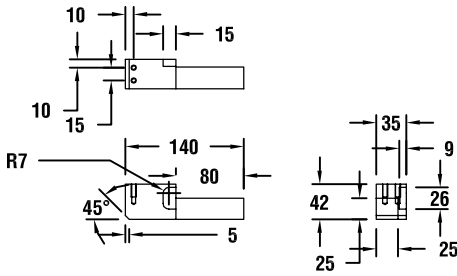


INDEX NUMBER: 36
T17002, CENTER DRILL HOLDER - METRIC

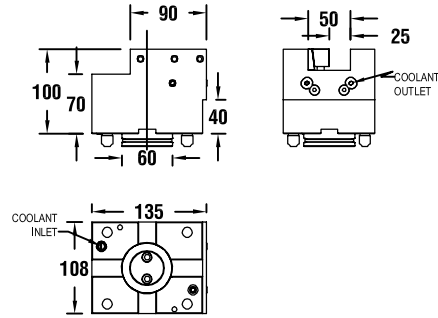




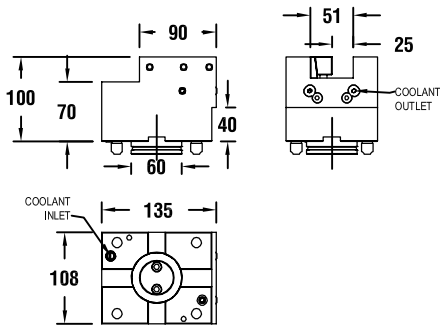
INDEX NUMBER: 37
T17003



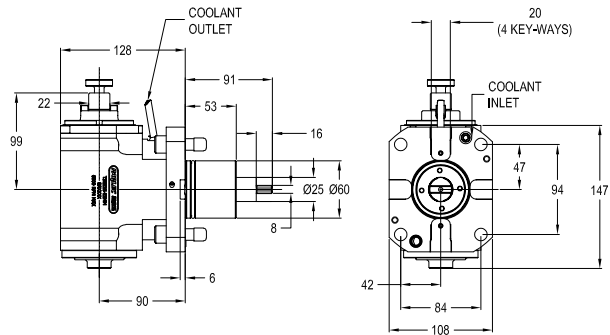
INDEX NUMBER: 38
T03005



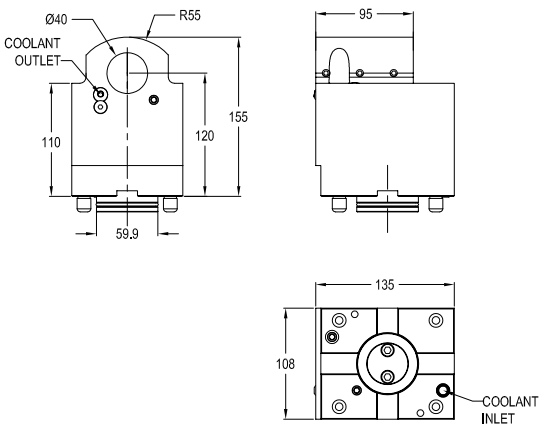
INDEX NUMBER: 39
T03013



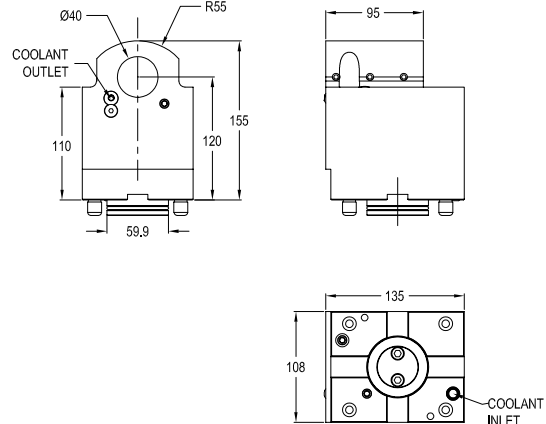
INDEX NUMBER: 40
T32226-22MM



INDEX NUMBER: 41
T10113



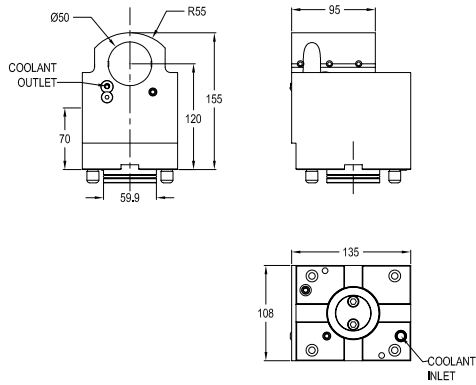
INDEX NUMBER: 42
T10134



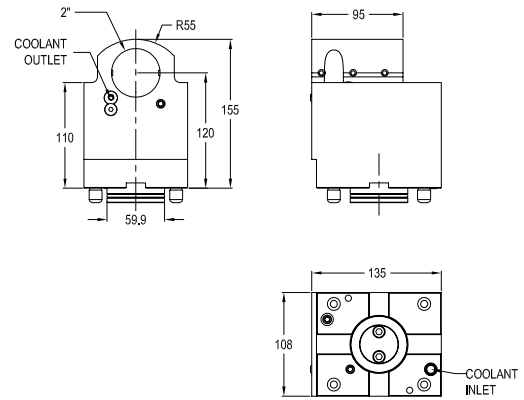
DRIVEN & STATIC



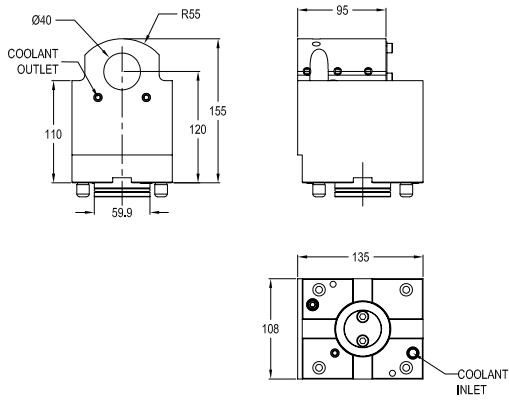
INDEX NUMBER: 43
T10114



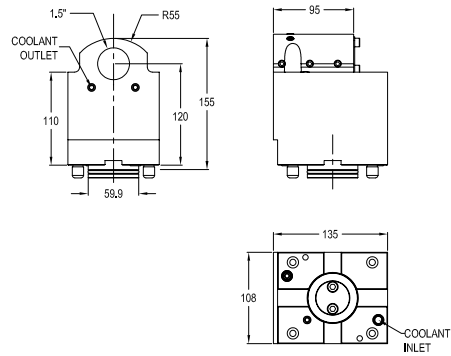
INDEX NUMBER: 44
T10135



INDEX NUMBER: 45
T13131



INDEX NUMBER: 46
T13137





Notes



TIRED OF WAITING WEEKS AND MONTHS TO HAVE YOUR TOOLS SHIPPED TO THE FACTORY?

We offer rebuild services in North America and Europe. Evaluations are complete within 3–5 days of receipt of the tool and a standard repair is complete within 10 days of customer approval. Emergency tool repairs are also available for customers who have machines down due to broken tools.

CAN I REPAIR THE TOOLS MYSELF OR PURCHASE COMPONENTS FOR PARLEC TOOLS?

- We are willing to supply components on all Parlec tools but do not recommend that you try the repair yourself. There is a lot more to a repair than just changing a component.

- Our assembly team is trained in:
 - Tool Design and Failure Modes
 - Bearing Failure Analysis
 - Seal Technology & Wear Analysis
 - Gear Failure Analysis
 - Tool Assembly, Preloads, Tool Break In and Tool Inspection

- This allows us to identify the root cause of the failure so that it does not cause premature tool failure in the future.

ECONOMICAL – REBUILDS

Economical – rebuilds typically cost 50% or less than the cost of a new tool and come with Parlec’s standard 6-month warranty on components we repair or replace.

PARLEC OFFERS REBUILD SERVICES ON ALL MAKES AND MODELS OF DRIVEN AND STATIC TOOLS.

How can Parlec rebuild competitor’s tools? The majority of tools that we repair have worn seals and bearings as the root cause of problem. This means that we have access to the same components that were supplied with the original tool. Should there be a failure in an OEM proprietary component that we do not have access to then we would recommend that you send the tool back to the manufacturer.

WHAT TO DO?

- Send us your tool marked “Repair Evaluation”, to:
Parlec Inc.
101 Perinton Parkway
Fairport, NY 14450, USA

- Be sure to include your company name and contact information and the make and model of the machine that the tool is used on inside the box.

6 MONTH WARRANTY ON EVERY TOOL

- All tools are calibrated in accordance with Parlec’s ISO 9001:2000 Quality System
- Free estimate on every tool
- Repairs available on all makes & models of tool
- Over 20 years of experience in repairing driven and static tools
- Annual maintenance contracts available



CONTACT INFORMATION For quick response, just photocopy this page, complete all information (please include Part Print where appropriate) and simply FAX back to Parlec at 1-800-866-5917.

Company _____

Contact Name _____ Title _____

Business Address _____ City _____ State _____ Zip _____

Phone _____ Fax _____ Email _____

DEALER INFORMATION

Dealer Name _____ Contact Name _____

Phone _____ Fax _____ Email _____

TECHNICAL INFORMATION

Turning Center Make _____

Turning Center Model Number _____

Coolant Type _____

- Internal
- External

Maximum Tool Speed _____

Tool Spindle 1:1 Ratio Other _____

Tool Description _____

(Please describe the type of tool that you are looking for and any special requirements.)

Application _____

(Please provide as much information as possible on your specific application, including material cutter size, tolerances, estimated cycle time for actual tools, etc.)

DRIVEN & STATIC